

Daily Outlook

GLOBAL STOCK INDEX

<p><u>DJIA</u></p>	<p>A gauge of global stocks fell for a third consecutive day on Friday amid uncertainty about global economic growth and trade tensions, posting its first weekly drop this year, while the U.S. dollar tallied its strongest week since August.</p> <p>MSCI's gauge of stocks across the globe shed 0.35 percent on the day, and dropped for the week following six consecutive weekly increases. Still, Wall Street's main equity indexes rallied late in the day on Friday, with the benchmark S&P 500 ending marginally positive.</p> <p>Investors were digesting economic and trade developments from Thursday, when the European Commission sharply cut its forecast for euro zone growth this year and next and U.S. President Donald Trump said he did not plan to meet with Chinese President Xi Jinping before a March 1 deadline to achieve a trade deal.</p> <p>The Dow Jones Industrial Average fell 63.27 points, or 0.25 percent, to 25,106.26, the S&P 500 gained 1.83 points, or 0.07 percent, to 2,707.88 and the Nasdaq Composite added 9.85 points, or 0.14 percent, to 7,298.20.</p> <p>Analysts now expect first-quarter earnings for S&P 500 companies to decline 0.1 percent from a year earlier, which would be the first such quarterly profit decline since 2016, according to IBES data from Refinitiv.</p>
<p><u>Nikkei</u></p>	<p>Japan's Nikkei closed at a one-month low on Friday, as renewed worries about the United States-China trade dispute plus dismal earnings from Japan Inc hurt risk appetites.</p> <p>The Nikkei share average sank 2 percent, its biggest one-day loss since early January, to 20,333.17, its lowest closing level since Jan. 10. For the week, the Nikkei shed 2.2 percent.</p> <p>U.S. President Donald Trump said he did not plan to meet Chinese President Xi Jinping before the March 1 deadline set by the two countries for reaching an agreement.</p> <p>The Japanese market was already under pressure with some blue-chip companies cutting profit forecasts.</p> <p>According to Daiwa Securities, out of 200 major companies it covers, 117 reported their third-quarter results as of Feb. 6 - and 31 of those cut their annual forecasts on a pretax profit basis.</p> <p>On Friday, Nikon Corp dived 12 percent after it reduced the annual operating profit forecast for its imaging business on struggling camera and chip equipment operations, hit by falling demand in China.</p>
<p><u>Kospi</u></p>	<p>South Korea's KOSPI stock index fell more than 1 percent on Friday on signs of intensifying Sino-U.S. trade tensions after U.S. President Donald Trump said he will not meet his Chinese counterpart. The Korean won was steady, while bond yields fell.</p> <p>The KOSPI closed down 26.37 points, or 1.20 percent, at 2,177.05. For the week, it weakened 1.2 percent, snapping four consecutive weekly gains.</p> <p>The stock index extended its loss after a media report that Trump is expected to sign an executive order to ban Chinese telecom equipment from U.S. wireless networks, Seo Sang-young, an analyst with Kiwoom Securities, said in a note.</p> <p>The Trump administration plans to announce the directive within this month, Politico reported on Thursday.</p> <p>Trump said on Thursday he did not plan to meet with Chinese President Xi Jinping before a March 1 deadline set by the two countries to achieve a trade deal, fuelling concerns over the trade friction.</p>
<p><u>Hang Seng</u></p>	<p>Hong Kong stocks ended weaker on Friday as the absence of any positive signs for a resolution in the U.S.-China trade row dented sentiment, but the market pared losses as investors eyed support from A-shares, which will resume trading next week.</p> <p>At the close of trade, the Hang Seng index was down 0.2 percent at 27,946.32 points, while the Hang Seng China Enterprises index fell 0.7 percent.</p> <p>Energy shares shed 1.4 percent as oil markets slipped on concerns over a global economic slowdown. But the IT sector ended 0.2 percent firmer, the financial sector closed up 0.1 percent and the property sector ended 0.3 percent higher.</p> <p>U.S. President Donald Trump said on Thursday he did not plan to meet Chinese President Xi Jinping before the March 1 deadline set by the two countries to achieve a trade deal, while White House economic adviser Larry Kudlow said the two leaders' meeting "is off in the distance".</p> <p>However, Hong Kong shares rebounded mid-session, having lost more than 1 percent in early trade, because "the market believes A-shares will open higher on Monday" as investors expect Beijing to continue its support for economic growth, said Steven Leung, director of sales, UOB Kay Hian in Hong Kong.</p> <p>The Hong Kong market reopened on Friday after a three-day Lunar New Year holiday. Trading in mainland Chinese stocks, remained closed this week and will resume on Monday.</p>

The markets in China are closed for the Lunar New Year holidays.

Closing Prices – 08 February 2019

	CLOSE	CHANGE		CLOSE	CHANGE
.DJI	25106.33	↓ 63.20/0.25%	.N225	20333.17	↓ 418.11/2.01%
/.SPX	2707.88	↑ 1.83/0.07%	.KS200	281.49	↓ 4.16/1.46%
/.IXIC	7298.198	↑ 9.846/0.14%	.HSI	27946.32	↓ 43.89/0.16%
JPY=	109.72	↓ 0.08/0.07%	/.SSEC	HOLIDAY	↑ 33.65990/1.30%
KRW=	1123.50	↓ 0.31/0.03%	/CLc1 (Oil)	52.71	↑ 0.10/0.19%

ECONOMIC INDICATORS

DATE	WIB	CT Y	INDICATORS	PER	ACTUAL	FORECAST	PREV.	REV.
Mon/04-Feb-19	04:45	NZ	Building Permits MoM	Dec	5.1%	--	-2.0%	
	All	CN	Bank Holiday (Lunar Day)					
	06:50	JP	Monetary Base End of period	Jan	¥500.2t	¥500.3t	¥504.2t	
	06:50	JP	Monetary Base YoY	Jan	4.7%	4.6%	4.8%	
	07:00	AU	Melbourne Institute Inflation MoM	Jan	-0.1%	--	0.4%	
	07:00	AU	Melbourne Institute Inflation YoY	Jan		--	1.9%	
	07:30	AU	Building Approvals MoM	Dec	-8.4%	2.0%	-9.1%	
	07:30	AU	Building Approvals YoY	Dec	-22.5%	-10.9%	-32.8%	
	16:30	GB	Markit/CIPS UK Construction PMI	Jan	50.6	52.5	52.8	
	16:30	EZ	Sentix Investor Confidence	Feb		--	-1.5	
	17:00	EZ	PPI MoM	Dec	-0.8%	-0.6%	-0.3%	
	17:00	EZ	PPI YoY	Dec	3%	3.4%	4.0%	
04-Feb - 09-Feb	N/A	US	Core PCE QoQ	4Q A		1.6%	1.6%	
04-Feb - 09-Feb	N/A	US	GDP Annualized QoQ	4Q A		2.6%	3.4%	
04-Feb - 09-Feb	N/A	US	GDP Price Index	4Q A		1.7%	1.8%	
04-Feb - 09-Feb	N/A	US	PCE Core MoM	Dec		0.2%	0.1%	
04-Feb - 09-Feb	N/A	US	PCE Core YoY	Dec		1.9%	1.9%	
04-Feb - 09-Feb	N/A	US	PCE Deflator MoM	Dec		0.0%	0.1%	
04-Feb - 09-Feb	N/A	US	PCE Deflator YoY	Dec		1.7%	1.8%	
04-Feb - 09-Feb	N/A	US	Personal Consumption	4Q A		3.8%	3.5%	
04-Feb - 09-Feb	N/A	US	Personal Income	Dec		0.5%	0.2%	
04-Feb - 09-Feb	N/A	US	Personal Spending	Dec		0.3%	0.4%	
04-Feb - 09-Feb	N/A	US	Real Personal Spending	Dec		0.2%	0.3%	
	22:00	US	Cap Goods Orders Nondef Ex Air	Nov F	-0.6%	-0.1%	-0.6%	
	22:00	US	Cap Goods Ship Nondef Ex Air	Nov F	-0.2%	0.2%	-0.1%	
	22:00	US	Durable Goods Orders	Nov F	0.7%	1.5%	0.8%	
	22:00	US	Durables Ex Transportation	Nov F		0.2%	-0.3%	
	22:00	US	Factory Orders	Nov	-0.6%	0.3%	-2.1%	
	22:00	US	Factory Orders Ex Trans	Nov F	-1.3%	--	0.3%	
Tue/05-Feb-19	04:30	AU	AiG Perf of Services Index	Jan	44.3	--	52.1	
	All	CN	Bank Holiday (Lunar Day)					
	05:00	AU	CBA Australia PMI Composite	Jan F	51.3	--	51.5	
	05:00	AU	CBA Australia PMI Services	Jan F	51	--	51	
	05:30	AU	ANZ Roy Morgan Weekly Consumer Confidence Index	Feb-03	118.1	--	116.5	
	07:00	NZ	ANZ Commodity Price	Jan	2.1%	--	-0.2%	
	07:30	US	Fed's Mester Discusses Economic Outlook and Monetary Policy					
	07:30	JP	Nikkei Japan PMI Composite	Jan	50.9	--	52	
	07:30	JP	Nikkei Japan PMI Services	Jan		--	51	
	07:30	AU	Retail Sales Ex Inflation QoQ	4Q	0.1%	0.5%	0.2%	
	07:30	AU	Retail Sales MoM	Dec	-0.4%	0.0%	0.4%	
	07:30	AU	Trade Balance	Dec	A\$3681m	A\$2225m	A\$1925m	
	10:30	AU	RBA Cash Rate Target	Feb-05	1.50%	1.50%	1.50%	
	15:55	DE	Markit Germany Services PMI	Jan F	53.0	53.1	53.1	
	15:55	DE	Markit/BME Germany Composite PMI	Jan F	52.1	52.1	52.1	

	16:00	EZ	Markit Eurozone Composite PMI	Jan F	50.7	50.7	50.7	
	16:00	EZ	Markit Eurozone Services PMI	Jan F	51.2	50.8	50.8	
	16:30	GB	Markit/CIPS UK Composite PMI	Jan	50.3	51.5	51.4	
	16:30	GB	Markit/CIPS UK Services PMI	Jan	50.1	51	51.2	
	16:30	GB	Official Reserves Changes	Jan	\$1540m	--	\$1387m	
	17:00	EZ	Retail Sales MoM	Dec	-1.6%	-1.6%	0.6%	0.8%
	17:00	EZ	Retail Sales YoY	Dec	0.8%	0.5%	1.1%	1.8%
05-Feb - 16-Feb	N/A	US	Advance Goods Trade Balance	Dec		-\$76.0b	--	
05-Feb - 16-Feb	N/A	US	Building Permits	Dec		1290k	1328k	
05-Feb - 16-Feb	N/A	US	Building Permits MoM	Dec		-2.9%	5.0%	
05-Feb - 16-Feb	N/A	US	Cap Goods Orders Nondef Ex Air	Dec F		--	--	
05-Feb - 16-Feb	N/A	US	Cap Goods Ship Nondef Ex Air	Dec F		--	--	
05-Feb - 16-Feb	N/A	US	Durable Goods Orders	Dec F		--	--	
05-Feb - 16-Feb	N/A	US	Durables Ex Transportation	Dec F		--	--	
05-Feb - 16-Feb	N/A	US	Factory Orders	Dec		--	--	
05-Feb - 16-Feb	N/A	US	Factory Orders Ex Trans	Dec F		--	--	
05-Feb - 16-Feb	N/A	US	Housing Starts	Dec		1250k	1256k	
05-Feb - 16-Feb	N/A	US	Housing Starts MoM	Dec		-0.5%	3.2%	
05-Feb - 16-Feb	N/A	US	New Home Sales	Dec		575k	--	
05-Feb - 16-Feb	N/A	US	New Home Sales MoM	Dec		5.7%	--	
05-Feb - 16-Feb	N/A	US	Retail Inventories MoM	Dec		--	--	
05-Feb - 16-Feb	N/A	US	Retail Sales Advance MoM	Dec		0.1%	0.2%	
05-Feb - 16-Feb	N/A	US	Retail Sales Control Group	Dec		0.3%	0.9%	
05-Feb - 16-Feb	N/A	US	Retail Sales Ex Auto and Gas	Dec		0.4%	0.5%	
05-Feb - 16-Feb	N/A	US	Retail Sales Ex Auto MoM	Dec		0.1%	0.2%	
	21:45	US	Markit US Composite PMI	Jan F	54.4	--	54.5	
	21:45	US	Markit US Services PMI	Jan F	54.2	54.2	54.2	
	22:00	US	ISM Non-Manufacturing Index	Jan	56.7	57	57.6	58
Wed/06-Feb-19	08:30	AU	RBA's Lowe Gives Speech in Sydney					
	All	CN	Bank Holiday (Lunar Day)					
	All	NZ	Bank Holiday (Waitangi Day)					
	14:00	DE	Factory Orders MoM	Dec	-1.6%	0.3%	-1.0%	-0.2%
	14:00	DE	Factory Orders WDA YoY	Dec	-7%	-6.7%	-4.3%	-3.4%
	15:30	DE	Markit Germany Construction PMI	Jan	50.7	--	53.3	
	20:30	CA	Building Permits MoM	Dec	6%	-1.0%	2.6%	2.1%
	20:30	US	Nonfarm Productivity	4Q P		1.7%	2.3%	
	20:30	US	Trade Balance	Nov	-\$49.3b	-\$54.0b	-\$55.5b	-\$55.7b
	20:30	US	Unit Labor Costs	4Q P		1.6%	0.9%	
	20:35	CA	Bank of Canada Deputy Governor Timoty Lane Speech					
	22:00	CA	Ivey Purchasing Managers Index SA	Jan	49.5	--	59.7	
	22:30	US	DOE Cushing OK Crude Inventory	Feb-01	1441K	--	-145k	
	22:30	US	DOE U.S. Crude Oil Inventories	Feb-01	1263K	1850K	919k	
	22:30	US	DOE U.S. Distillate Inventory	Feb-01	-2257K	-2000K	-1122k	
	22:30	US	DOE U.S. Gasoline Inventories	Feb-01	513K	1500K	-2235k	
Thu/07-Feb-19	04:30	AU	AiG Perf of Construction Index	Jan	43.1	--	42.6	
	04:45	NZ	Average Hourly Earnings QoQ	4Q	1.0%	0.9%	1.4%	
	04:45	NZ	Employment Change QoQ	4Q	0.1%	0.3%	1.1%	
	04:45	NZ	Employment Change YoY	4Q	2.3%	2.6%	2.8%	
	04:45	NZ	Participation Rate	4Q	70.9%	71.1%	71.1%	
	04:45	NZ	Pvt Wages Ex Overtime QoQ	4Q	0.5%	0.6%	0.5%	
	04:45	NZ	Pvt Wages Inc Overtime QoQ	4Q		0.6%	0.5%	
	04:45	NZ	Unemployment Rate	4Q	4.3%	4.1%	3.9%	
	All	CN	Bank Holiday (Lunar Day)					
	06:50	JP	Official Reserve Assets	Jan	\$1279.3b	--	\$1271.0b	
	07:00	US	Fed Chairman Powell to Host Town Hall Meeting with Educators					
	07:30	AU	NAB Business Confidence	4Q	1	--	3	
	12:00	JP	Coincident Index	Dec P	102.3	102.2	102.9	
	12:00	JP	Leading Index CI	Dec P	97.9	97.9	99.1	
	12:30	AU	Foreign Reserves	Jan	A\$61.3b	--	A\$76.3b	
	14:00	DE	Industrial Production SA MoM	Dec	-0.4%	0.8%	-1.9%	
	14:00	DE	Industrial Production WDA YoY	Dec	-3.9%	-3.3%	-4.7%	
	15:00	CH	Foreign Currency Reserves	Jan	741.5b	731.3b	729.0b	
	15:30	GB	Halifax House Price 3Mths/Year	Jan	0.8%	1.5%	1.3%	
	15:30	GB	Halifax House Prices MoM	Jan	-2.9%	-0.7%	2.2%	2.5%
	16:00	EZ	ECB Publishes Economic Bulletin					
	17:00	EZ	European Commission publishes Economic Forecasts					
	19:00	GB	Bank of England Bank Rate	Feb-07	0.75%	0.75%	0.75%	
	19:00	GB	Bank of England Inflation Report					
	19:00	GB	BOE Asset Purchase Target	Feb	435b	435b	435b	
	19:00	GB	BOE Corporate Bond Target	Feb	10b	10b	10b	
07-Feb - 16-Feb	N/A	US	Trade Balance	Dec		--	--	

	20:30	US	Continuing Claims	Jan-26	1736k	1733k	1782k	
	20:30	US	Initial Jobless Claims	Feb-02	234k	221k	253k	
Fri/08-Feb-19	03:00	US	Consumer Credit	Dec	\$16.554b	\$15.300b	\$22.149b	\$22.408b
	04:00	KR	Foreign Reserves	Jan	\$405.51b	--	\$403.69b	
	All	CN	Bank Holiday (Lunar Day)					
	06:30	JP	Household Spending YoY	Dec	0.1%	0.8%	-0.6%	
	06:50	JP	Bank Lending Ex-Trusts YoY	Jan	2.4%	--	2.5%	
	06:50	JP	Bank Lending Incl Trusts YoY	Jan	2.4%	--	2.4%	
	06:50	JP	BoP Current Account Adjusted	Dec P	¥1562.3b	¥1501.6b	¥1438.7b	
	06:50	JP	BoP Current Account Balance	Dec	¥452.8b	¥469.3b	¥757.2b	
	06:50	JP	Trade Balance BoP Basis	Dec P	¥216.2b	¥132.4b	-¥559.1b	
	07:00	JP	Labor Cash Earnings YoY	Dec	1.8%	1.7%	2.0%	1.7%
	07:00	JP	Real Cash Earnings YoY	Dec	1.4%	1.7%	1.1%	0.8%
	07:30	US	Fed's Bullard Speaks at St. Cloud State University					
	07:30	HK	Nikkei Hong Kong PMI	Jan		--	48	
	07:30	AU	RBA Statement on Monetary Policy					
	12:00	JP	Eco Watchers Survey Current SA	Jan	45.6	48.3	48	46.8
	12:00	JP	Eco Watchers Survey Outlook SA	Jan	49.4	48.1	48.5	47.9
	13:45	CH	Unemployment Rate	Jan	2.4%	2.7%	2.7%	
	13:45	CH	Unemployment Rate SA	Jan	2.8%	2.4%	2.4%	
	14:00	DE	Current Account Balance	Dec	21.0b	23.3b	21.4b	21.6b
	14:00	DE	Exports SA MoM	Dec	1.5%	0.5%	-0.4%	-0.3%
	14:00	DE	Imports SA MoM	Dec	1.2%	0.4%	-1.6%	-1.3%
	14:00	DE	Trade Balance	Dec	13.9b	17.3b	20.5b	20.4b
08-Feb - 16-Feb	N/A	US	Wholesale Inventories MoM	Dec F		--	--	
08-Feb - 16-Feb	N/A	US	Wholesale Trade Sales MoM	Dec		--	--	
	20:30	CA	Full Time Employment Change	Jan	30.9k	--	-18.9k	-6.6k
	20:30	CA	Hourly Wage Rate Permanent Employees YoY	Jan	1.8%	1.6%	1.5%	
	20:30	CA	Net Change in Employment	Jan	66.8k	8.0k	9.3k	-1.3k
	20:30	CA	Part Time Employment Change	Jan	36k	--	28.3k	
	20:30	CA	Participation Rate	Jan	65.6%	--	65.4	
	20:30	CA	Unemployment Rate	Jan	5.8%	5.7%	5.6%	
Sat/09-Feb-19	01:00	US	Baker Hughes U.S. Rig Count	Feb-08	1049	--	1045	

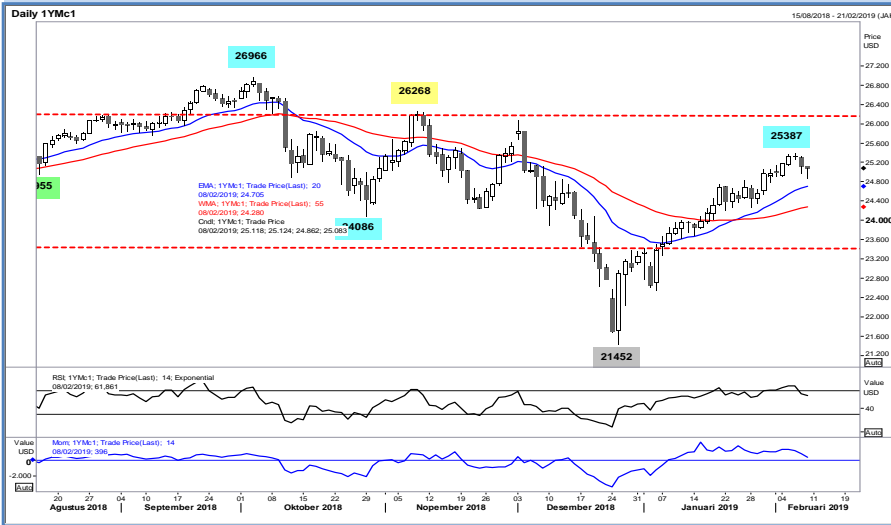
DATE	WIB	CT Y	INDICATORS	PER	ACTUAL	FORECAST	PREV.	REV.
11-Feb - 18-Feb	N/A	CN	Foreign Direct Investment YoY CNY	Jan		--	24.9%	
	N/A	CN	Foreign Reserves	Jan		\$3081.85b	\$3072.71b	
Mon/11-Feb-19	All Day	JP	Bank Holiday (National Foundation Day)					
	14:30	CH	CPI Core YoY	Jan		--	0.3%	
	14:30	CH	CPI EU Harmonized MoM	Jan		--	0.0%	
	14:30	CH	CPI EU Harmonized YoY	Jan		--	0.8%	
	14:30	CH	CPI MoM	Jan		--	-0.3%	
	14:30	CH	CPI YoY	Jan		0.6%	0.7%	
	15:00	EZ	ECB Vice President Luis de Guindos Speaks in Madrid					
	16:30	GB	Construction Output SA MoM	Dec		--	0.6%	
	16:30	GB	Construction Output SA YoY	Dec		--	3.0%	
	16:30	GB	Exports QoQ	4Q P		--	2.7%	
	16:30	GB	GDP (MoM)	Dec		--	0.2%	
	16:30	GB	GDP QoQ	4Q P		--	0.6%	
	16:30	GB	GDP YoY	4Q P		--	1.5%	
	16:30	GB	Government Spending QoQ	4Q P		--	0.6%	
	16:30	GB	Gross Fixed Capital Formation QoQ	4Q P		--	0.8%	
	16:30	GB	Imports QoQ	4Q P		--	0.0%	
	16:30	GB	Index of Services 3M/3M	Dec		--	0.3%	
	16:30	GB	Index of Services MoM	Dec		--	0.3%	
	16:30	GB	Industrial Production MoM	Dec		--	-0.4%	
	16:30	GB	Industrial Production YoY	Dec		--	-1.5%	
	16:30	GB	Manufacturing Production MoM	Dec		--	-0.3%	
	16:30	GB	Manufacturing Production YoY	Dec		--	-1.1%	
	16:30	GB	Monthly GDP 3M/3M Change	Dec		--	0.3%	
	16:30	GB	Private Consumption QoQ	4Q P		--	0.5%	
	16:30	GB	Total Business Investment QoQ	4Q P		--	-1.1%	
	16:30	GB	Total Business Investment YoY	4Q P		--	-1.8%	
	16:30	GB	Trade Balance	Dec		--	-£2904m	
	16:30	GB	Trade Balance Non EU GBP/Mn	Dec		--	-£3925m	
	16:30	GB	Visible Trade Balance GBP/Mn	Dec		--	-£12023m	
	20:30	US	Revisions: Consumer Price Index					
11-Feb - 16-Feb	N/A	US	Nonfarm Productivity	4Q P		1.6%	2.3%	
11-Feb - 16-Feb	N/A	US	Unit Labor Costs	4Q P		1.7%	0.9%	

Tue/12-Feb-19	07:30	AU	Home Loans MoM	Dec	--	-0.9%
	07:30	AU	Investment Lending	Dec	--	-4.5%
	07:30	AU	NAB Business Conditions	Jan	--	2
	07:30	AU	NAB Business Confidence	Jan	--	3
	07:30	AU	Owner-Occupier Loan Value MoM	Dec	--	-1.4%
	11:30	JP	Tertiary Industry Index MoM	Dec	--	-0.3%
	13:00	JP	Machine Tool Orders YoY	Jan P	--	-18.3%
	18:00	US	NFIB Small Business Optimism	Jan	--	104.4
Wed/13-Feb-19	03:50	AU	RBA's Heath Speaks in Sydney			
	06:00	KR	Unemployment rate SA	Jan	--	3.8%
	06:30	US	Fed's Mester Speaks on Economic Outlook and Monetary Policy			
	06:30	AU	Westpac Consumer Conf Index	Feb	--	99.6
	06:30	AU	Westpac Consumer Conf SA MoM	Feb	--	-4.7%
	06:50	JP	PPI MoM	Jan	--	-0.6%
	06:50	JP	PPI YoY	Jan	--	1.5%
	07:30	US	Fed's George Speaks on the U.S. Economy			
	08:00	NZ	RBNZ Official Cash Rate	Feb-13	--	1.75%
	09:00	NZ	2Yr Inflation Expectation	1Q	--	2.03%
	15:05	EZ	ECB Governing Council Member Philip Lane Speaks in Dublin			
	16:30	GB	CPI Core YoY	Jan	--	1.9%
	16:30	GB	CPI MoM	Jan	--	0.2%
	16:30	GB	CPI YoY	Jan	--	2.1%
	16:30	GB	CPIH YoY	Jan	--	2.0%
	16:30	GB	House Price Index YoY	Jan	--	2.8%
	16:30	GB	PPI Input NSA MoM	Jan	--	-1.0%
	16:30	GB	PPI Input NSA YoY	Jan	--	3.7%
	16:30	GB	PPI Output Core NSA MoM	Jan	--	0.2%
	16:30	GB	PPI Output Core NSA YoY	Jan	--	2.5%
	16:30	GB	PPI Output NSA MoM	Jan	--	-0.3%
	16:30	GB	PPI Output NSA YoY	Jan	--	2.5%
	16:30	GB	Retail Price Index	Jan	--	285.6
	16:30	GB	RPI Ex Mort Int.Payments (YoY)	Jan	--	2.7%
	16:30	GB	RPI MoM	Jan	--	0.4%
	16:30	GB	RPI YoY	Jan	--	2.7%
	17:00	EZ	Industrial Production SA MoM	Dec	--	-1.7%
	17:00	EZ	Industrial Production WDA YoY	Dec	--	-3.3%
	20:30	US	CPI Core Index SA	Jan	--	260.027
	20:30	US	CPI Ex Food and Energy MoM	Jan	0.2%	0.2%
	20:30	US	CPI Ex Food and Energy YoY	Jan	2.1%	2.2%
	20:30	US	CPI Index NSA	Jan	--	251.233
20:30	US	CPI MoM	Jan	0.1%	-0.1%	
20:30	US	CPI YoY	Jan	1.5%	1.9%	
20:30	US	Real Avg Hourly Earning YoY	Jan	--	1.1%	
20:30	US	Real Avg Weekly Earnings YoY	Jan	--	1.2%	
20:50	US	Fed's Bostic to Speak to European Financial Forum in Dublin				
20:50	US	Fed's Mester Speaks on Economic Outlook and Monetary Policy				
22:30	US	DOE Cushing OK Crude Inventory	Feb-08	--	1441k	
22:30	US	DOE U.S. Crude Oil Inventories	Feb-08	--	1263k	
22:30	US	DOE U.S. Distillate Inventory	Feb-08	--	-2257k	
22:30	US	DOE U.S. Gasoline Inventories	Feb-08	--	513k	
Thu/14-Feb-19	02:00	US	Monthly Budget Statement	Dec	-\$10.5b	-\$204.9b
	06:50	JP	GDP Annualized SA QoQ	4Q P	1.4%	-2.5%
	06:50	JP	GDP Business Spending QoQ	4Q P	1.8%	-2.8%
	06:50	JP	GDP Deflator YoY	4Q P	-0.4%	-0.3%
	06:50	JP	GDP Nominal SA QoQ	4Q P	0.4%	-0.7%
	06:50	JP	GDP Private Consumption QoQ	4Q P	0.8%	-0.2%
	06:50	JP	GDP SA QoQ	4Q P	0.3%	-0.6%
	07:00	AU	Consumer Inflation Expectation	Feb	--	3.5%
	07:01	GB	RICS House Price Balance	Jan	--	-19%
	N/A	CN	Exports YoY	Jan	-2.7%	-4.4%
	N/A	CN	Exports YoY CNY	Jan	3.2%	0.2%
	N/A	CN	Imports YoY	Jan	-11.0%	-7.6%
	N/A	CN	Imports YoY CNY	Jan	-2.4%	-3.1%
	N/A	CN	Trade Balance	Jan	\$32.00b	\$57.06b
	N/A	CN	Trade Balance CNY	Jan	235.95b	394.99b
	14:00	DE	GDP NSA YoY	4Q P	--	1.1%
	14:00	DE	GDP SA QoQ	4Q P	--	-0.2%
	14:00	DE	GDP WDA YoY	4Q P	--	1.1%

	17:00	EZ	Employment QoQ	4Q P		--	0.2%	
	17:00	EZ	Employment YoY	4Q P		--	1.3%	
	17:00	EZ	GDP SA QoQ	4Q P		--	0.2%	
	17:00	EZ	GDP SA YoY	4Q P		--	1.2%	
	20:30	US	Continuing Claims	Feb-02		--	--	
	20:30	US	Initial Jobless Claims	Feb-09		--	--	
	20:30	CA	Manufacturing Sales MoM	Dec		--	-1.4%	
	20:30	US	PPI Ex Food and Energy MoM	Jan		0.2%	-0.1%	
	20:30	US	PPI Ex Food and Energy YoY	Jan		--	2.7%	
	20:30	US	PPI Ex Food, Energy, Trade MoM	Jan		0.2%	0.0%	
	20:30	US	PPI Ex Food, Energy, Trade YoY	Jan		--	2.8%	
	20:30	US	PPI Final Demand MoM	Jan		0.1%	-0.2%	
	20:30	US	PPI Final Demand YoY	Jan		2.3%	2.5%	
	20:30	US	Retail Sales Advance MoM	Dec		0.1%	0.2%	
	20:30	US	Retail Sales Control Group	Dec		0.4%	0.9%	
	20:30	US	Retail Sales Ex Auto and Gas	Dec		0.4%	0.5%	
	20:30	US	Retail Sales Ex Auto MoM	Dec		0.0%	0.2%	
	22:00	US	Business Inventories	Nov		0.3%	0.6%	
Fri/15-Feb-19	04:30	NZ	BusinessNZ Manufacturing PMI	Jan		--	55.1	
	06:00	KR	BoP Current Account Balance	Dec		--	\$5063.4m	
	06:00	KR	BoP Goods Balance	Dec		--	\$7974m	
	08:30	CN	CPI YoY	Jan		--	1.9%	
	08:30	CN	PPI YoY	Jan		--	0.9%	
	N/A	CN	BoP Current Account Balance	4Q P		--	\$23.3b	
	11:30	JP	Capacity Utilization MoM	Dec		--	1.0%	
	11:30	JP	Industrial Production MoM	Dec F		--	-0.1%	
	11:30	JP	Industrial Production YoY	Dec F		--	-1.9%	
	16:30	GB	Retail Sales Ex Auto Fuel MoM	Jan		--	-1.3%	
	16:30	GB	Retail Sales Ex Auto Fuel YoY	Jan		--	2.6%	
	16:30	GB	Retail Sales Inc Auto Fuel MoM	Jan		--	-0.9%	
	16:30	GB	Retail Sales Inc Auto Fuel YoY	Jan		--	3.0%	
	17:00	EZ	Trade Balance NSA	Dec		--	19.0b	
	17:00	EZ	Trade Balance SA	Dec		--	15.1b	
	20:30	US	Empire Manufacturing	Feb		--	3.9	
	21:15	US	Capacity Utilization	Jan		78.8%	78.7%	
	21:15	US	Industrial Production MoM	Jan		0.2%	0.3%	
	21:15	US	Manufacturing (SIC) Production	Jan		0.2%	1.1%	
	22:00	US	U. of Mich. 1 Yr Inflation	Feb P		--	2.7%	
	22:00	US	U. of Mich. 5-10 Yr Inflation	Feb P		--	2.6%	
	22:00	US	U. of Mich. Current Conditions	Feb P		--	108.8	
	22:00	US	U. of Mich. Expectations	Feb P		--	79.9	
	22:00	US	U. of Mich. Sentiment	Feb P		93	91.2	
Sat/16-Feb-19	01:00	US	Baker Hughes U.S. Rig Count	Feb-15		--	--	

Dow Jones (1YMH9 – Mar)

Exp. Date: 15 Mar 2019



RESISTANCE	25458
	25291
	25196
SUPPORT	24934
	24767
	24672
SUGGESTION	BUY ---
	SELL 25130
	S/L 25260
	T/P: 24930 24830

DATE	OPEN	HIGH	LOW	RANGE	CLOSE	SETTLE	CHANGE	CHANGE %	VOLUME
08 Feb	25118	25124	24862	262	25101	25101	↓ 30	0.12	221599

WEEKLY		FEBRUARY		2019	
HIGH	LOW	HIGH	LOW	HIGH	LOW
25387 (06/Feb)	24862 (08/Feb)	25387 (06/Feb)	24862 (08/Feb)	25387 (06/Feb)	22563 (04/Jan)

Nikkei (SSlamH9 – Mar)

Last Trading Date: 11 Mar 2019



RESISTANCE	20853
	20691
	20483
SUPPORT	20113
	19951
	19743
SUGGESTION	BUY ---
	SELL 20305
	S/L 20430
	T/P: 20105 20005

DATE	OPEN	HIGH	LOW	RANGE	CLOSE	SETTLE	CHANGE	CHANGE%	VOLUME
08 Feb (PM)	20290	20365	20160	205	20275	----	↓ 10	0.05	22166
08 Feb (AM)	20510	20530	20270	260	20285	20285	↓ 445	2.15	67769

WEEKLY		FEBRUARY		2019	
HIGH	LOW	HIGH	LOW	HIGH	LOW
20955 (05/Feb)	20160 (08/Feb)	20955 (05/Feb)	20160 (08/Feb)	20955 (05/Feb)	19205 (04/Jan)

Kospi 200 (KSH9 – Mar)

Exp. Date: 14 Mar 2019



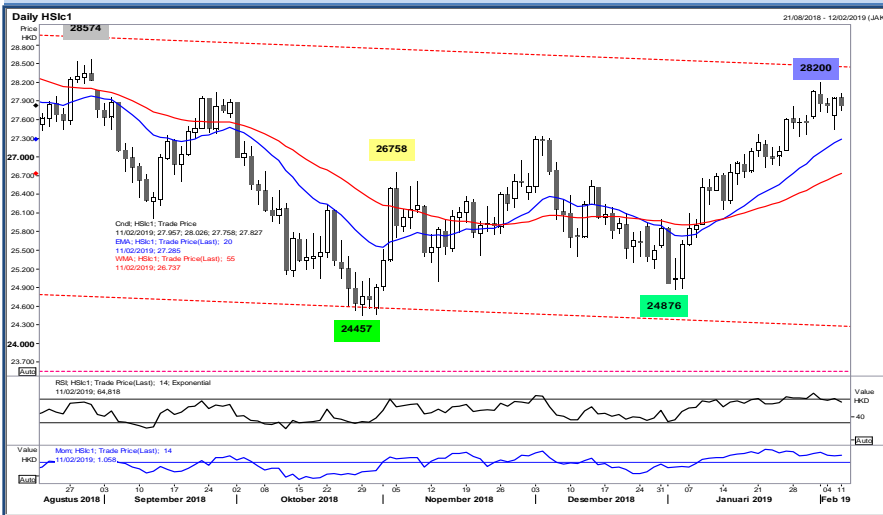
RESISTANCE	287.26	
	286.03	
	283.96	
SUPPORT	280.66	
	279.43	
	277.36	
SUGGESTION	BUY	281.60
	SELL	---
	S/L	280.30
	T/P:	283.60 284.60

DATE	OPEN	HIGH	LOW	RANGE	CLOSE	SETTLE	CHANGE	CHANGE %	VOLUME
08 Feb	284.50	284.80	281.50	3.30	281.90	281.90	↓ 4.10	1.43	254865

WEEKLY		FEBRUARY		2019	
HIGH	LOW	HIGH	LOW	HIGH	LOW
288.25 (07/Feb)	281.50 (08/Feb)	289.05 (01/Feb)	281.50 (08/Feb)	290.35 (31/Jan)	255.60 (04/Jan)

Hang Seng (HSIG9 – Feb)

Exp. Date: 27 Feb 2019



RESISTANCE	28250	
	28138	
	27982	
SUPPORT	27714	
	27602	
	27446	
SUGGESTION	BUY	---
	SELL	27860
	S/L	28010
	T/P:	27635 27510

DATE	OPEN	HIGH	LOW	RANGE	CLOSE	SETTLE	CHANGE	CHANGE %	VOLUME
08 Feb	27666	27960	27450	510	27951	27951	↑ 125	0.45	110639

WEEKLY		FEBRUARY		2019	
HIGH	LOW	HIGH	LOW	HIGH	LOW
27960 (08/Feb)	27450 (08/Feb)	28200 (01/Feb)	27450 (08/Feb)	28200 (01/Feb)	24876 (03/Jan)



DISCLAIMER:

The information contained above is intended to provide general information and does not constitute or purports to be a financial advice, investment advice, trading advice, or any other advice. Any strategies, views or opinions expressed above are not intended to be presented as an offer or solicitation for the purchase or sale of any financial instrument. Client should seek personal professional advice before making any decisions. The client should ensure that financial instruments are suitable for his/her own individual objectives, financial situation and investment needs. This report is prepared for the use of Alpha Gold Futures clients. The reproduction and redistribution of this material is strictly prohibited