

## Daily Outlook

### GLOBAL STOCK INDEX

<p><b><u>DJIA</u></b></p>	<p><b>The New York Stock Exchange</b> ended up on Friday, driven by a renewed optimism on trade talks between the United States and China, consolidating its best quarterly performance in nearly a decade. The Dow Jones index gained 211.22 points, or 0.82%, to 25,928.68. The broader S &amp; P-500 took 18.96 points, or 0.67%, at 2,834.40. Nasdaq Composite rose 60.16 points or 0.78% to 7,729.32. Over the week, the Dow sold 1.67%, the S &amp; P-500 1.2% and the Nasdaq 1.13%. The month of March ended with a rise of 0.05% for the Dow, 1.79% for the S &amp; P-500 and 2.61% for the Nasdaq.</p> <p>In the first three months of the year, the S &amp; P-500 posted an increase of 13.07%, its best performance since the third quarter of 2009. This is also its largest increase in a first quarter since 1998. US Treasury Secretary Steven Mnuchin's remarks about "fruitful" talks with his Chinese counterparts in Beijing and news from the Chinese official press about the progress made by both parties are good news for the continuation of the talks. next week in Washington.</p> <p>Another encouraging factor is the return to positive territory of the difference between the yield on 10-year Treasury bonds and the three-month Treasury bonds, which ends the first reversal of this part of the curve since 2007, a phenomenon that fed fears of recession for a week.</p>
<p><b><u>Nikkei</u></b></p>	<p><b>Japan's Nikkei</b> rose on Friday on optimism about the latest round of U.S.-China trade talks, with cyclical sectors such as shipping and machinery advancing on the last day of the Japanese fiscal year. Daiichi Sankyo Co grabbed the spotlight with a 16 percent jump to a daily-limit and record high of 5,100 yen. The drugmaker is joining forces with AstraZeneca Plc to develop and sell a Daiichi cancer drug. The Nikkei share average rose 0.82 percent to 21,205.81. It fell 0.8 percent for the month, but gained 6.0 percent for the quarter.</p> <p>Machinery and shipping stocks steamed ahead, with Kawasaki Kisen up 2.3 percent and Yaskawa Electric surging 2.4 percent.</p> <p>Worries about global economic growth have rattled markets since the U.S. Federal Reserve abandoned projections for any interest rate hikes this year, and the U.S. Treasury yield curve inverted for the first time since 2007.</p> <p>Cyclical stocks such as industrial and machinery firms have rebounded from December lows and will likely remain in favour on hopes that China will step up measures to shore up the economy, likely giving the manufacturing sector a fillip.</p> <p>On the other hand, concerns about a U.S. economic slowdown will likely limit the market's upside. U.S. officials are in Beijing for a fresh round of trade talks on Friday, to be followed by discussions in Washington next week between the world's two largest economies.</p>
<p><b><u>Kospi</u></b></p>	<p><b>South Korea's KOSPI stock index</b> closed higher on Friday as progress made in trade talks between the United States and China improved investors' risk appetite. The Korean won and benchmark bond yield also climbed higher.</p> <p>The Seoul stock market's main index ended up by 12.57 points or 0.59 percent to 2,140.67 points. For the week, the index lost 2.1 percent, while it fell 2.5 percent on a monthly basis. For the quarter, KOSPI added 4.9 percent.</p> <p>In talks with the United States, China made proposals on a range of issues that go further than it has before, including on forced technology transfer, as the two sides work to overcome obstacles to a deal to end their protracted trade war.</p> <p>Korean markets were boosted by expectation of Sino-U.S. trade talks and solid Chinese stocks, said Seo Sang-young, an analyst from Kiwoom Securities. Stabilizing U.S. bond yield and trade optimism helped the index turn higher, he added.</p> <p>South Korea's tourism and construction shares exposed to North Korea jumped as South Korean presidential office said President Moon Jae-in will meet U.S. President Donald Trump.</p>
<p><b><u>Hang Seng &amp; Shanghai</u></b></p>	<p>➤ <b>Hong Kong stocks</b> closed higher on Friday to log their third monthly gain, tracking gains in mainland as investors cheered Beijing's pledge to further liberalise financial markets, and on renewed hopes of progress in the U.S.-China trade talks.</p> <p>The Hang Seng index rose 1.0 percent to 29,051.36, while the China Enterprises Index gained 0.8 percent to 11,379.62.</p> <p>For the week, the HSI index slipped 0.2 percent, while HSCE index eased 1.2 percent. For the month, the HSI gained 1.5 percent, while HSCE inched up 0.1 percent, both posting their third monthly climb.</p> <p>Hong Kong was encouraged by a surge in mainland stocks, as Beijing vowed to further open up its financial markets.</p>

Hopes of progress in Sino-U.S. trade talks also lifted sentiment. U.S. Treasury Secretary Steven Mnuchin said on Friday he and U.S. Trade Representative Robert Lighthizer had concluded "constructive" trade talks in Beijing.

➤ **China stock** closed higher on Friday to clock the third straight month of gains, as investors cheered Beijing's pledge to further liberalise financial markets, and on renewed hopes of progress in U.S.-China trade talks.

The blue-chip CSI300 index ended up 3.9 percent to 3,872.34 points, while the Shanghai Composite Index closed up 3.2 percent at 3,090.76 points.

For the week, CSI300 edged up 1 percent, SSEC slipped 0.4 percent.

For the month, CSI300 was up 5.5 percent, while SSEC gained 5.1 percent, both posting their third month of rises in a row.

China will sharply expand market access for foreign banks and securities and insurance companies, especially in its financial services sector, Premier Li Keqiang said on Thursday, as senior U.S. officials arrived in Beijing for more trade talks.

China has pledged to further open its massive financial markets to foreign investors amid a trade war with the United States. Foreign businesses have long complained that liberalisation has been too narrow and implementation spotty.

The Bloomberg Barclays Global Aggregate Index will start including China's onshore bonds starting next Monday, a milestone in China's capital markets opening.

The CSI300 financials index shot up 4.9 percent on Friday.

Encouraged by Beijing's stance, foreigners on Friday bought more than 10 billion yuan (\$1.49 billion) worth of A-shares via the Stock Connect linking mainland and Hong Kong.

Hopes of progress in Sino-U.S. trade talks also lifted sentiment.

The mood was brightened after U.S. officials said China has made proposals in trade talks with the United States on a range of issues that go further than it has before, including on forced technology transfer.

U.S. Treasury Secretary Steven Mnuchin said on Friday he had a "productive working dinner" the previous night in Beijing, kicking off a day of talks aimed at resolving the bitter trade dispute between the world's two largest economies.

Sectors spiked across the board, led by consumer firms.

**Closing Prices – 29 March 2019**

	CLOSE	CHANGE		CLOSE	CHANGE
.DJI	25928.68	↑ 211.22/0.82%	.N225	21205.81	↑ 172.05/0.82%
/.SPX	2834.40	↑ 18.96/0.67%	.KS200	276.48	↑ 1.40/0.51%
/.IXIC	7729.321	↑ 60.155/0.78%	.HSI	29051.36	↑ 276.15/0.96%
JPY=	110.84	↑ 0.22/0.20%	/.SSEC	3090.75800	↑ 95.81460/3.20%
KRW=	1136.10	↑ 1.15/0.10%	/CLc1 (Oil)	60.18	↑ 0.67/1.13%

**ECONOMIC INDICATORS**

DATE	WIB	CTY	INDICATORS	PER	ACTUAL	FORECAST	PREV.	REV.
<b>Mon/25-Mar-19</b>	08:45	US	Fed's Evans Speaks on a Panel in Hong Kong					
	11:30	JP	All Industry Activity Index MoM	Jan	-0.2%	-0.4%	-0.4%	-0.6%
	12:00	US	Fed's Evans Gives Speech in Hong Kong					
	13:30	JP	BOJ Harada makes a speech at conference held by DIR					
	16:00	DE	Ifo Business Climate	Mar	99.6	98.5	98.5	
	16:00	DE	Ifo Current Assessment	Mar	103.8	102.9	103.4	
	16:00	DE	Ifo Expectations	Mar	95.6	94.0	93.8	
	17:00	US	Fed's Harker Speaks in London on Economic Outlook					
	19:30	US	Chicago Fed Nat Activity Index	Feb	-0.29	-0.38	-0.43	-0.25
	21:30	US	Dallas Fed Manf. Activity	Mar	8.3	8.9	13.1	
<b>Tue/26-Mar-19</b>	03:30	AU	RBA's Ellis gives speech in Sydney					
	04:45	NZ	Exports NZD	Feb	4.82b	4.70b	4.40b	4.33b
	04:45	NZ	Imports NZD	Feb	4.80b	4.90b	5.32b	5.28b
	04:45	NZ	Trade Balance 12 Mth YTD NZD	Feb	-6621m	-6675m	-6358m	-6445m
	04:45	NZ	Trade Balance NZD	Feb	12m	-200m	-914m	-948m
	06:50	JP	BOJ Summary of Opinions					
	06:50	JP	PPI Services YoY	Feb	1.1%	1.1%	1.1%	1.0%
	07:30	US	Fed's Rosengren Speaks at Finance Conference in Hong Kong					
	14:00	DE	GfK Consumer Confidence	Apr	10.4	10.8	10.8	10.7
	15:30	HK	Exports YoY	Feb	-6.9%	--	-0.4%	
	15:30	HK	Imports YoY	Feb	-3.8%	--	-6.0%	
	15:30	HK	Trade Balance HKD	Feb	H\$-48.8b	H\$-46b	H\$-10.3b	
	16:30	GB	UK Finance Loans for Housing	Feb	35300	39600	40634	39560
	17:30	US	Fed's Evans Takes Part in a Moderated Q&A in Hong Kong					
	18:00	GB	BOE's Broadbent Speak on Statistics in London					
	18:00	EZ	Slovakia's central bank Governor Makuch Speaks in Bratislava					
	19:00	US	Fed's Harker Speaks in Frankfurt on Economic Outlook					
	19:30	US	Building Permits	Feb	1296k	1320k	1345k	
	19:30	US	Building Permits MoM	Feb	-1.6%	-1.3%	1.4%	
	19:30	US	Housing Starts	Feb	1162k	1225k	1230k	
	19:30	US	Housing Starts MoM	Feb	-8.7%	-0.8%	18.6%	
	20:00	US	FHFA House Price Index MoM	Jan	0.6%	0.4%	0.3%	
	20:00	US	S&P CoreLogic CS 20-City MoM SA	Jan	0.11%	0.3%	0.19%	
	20:00	US	S&P CoreLogic CS 20-City NSA Index	Jan	212.41	212.88	212.96	
	20:00	US	S&P CoreLogic CS 20-City YoY NSA	Jan	4.26%	4.0%	4.18%	
	20:00	US	S&P CoreLogic CS US HPI NSA Index	Jan	204.71	--	205.35	205.07
	20:00	US	S&P CoreLogic CS US HPI YoY NSA	Jan	4.26%	--	4.72%	4.6%
	21:00	US	Conf. Board Consumer Confidence	Mar	124.1	132.5	131.4	
	21:00	US	Conf. Board Expectations	Mar	99.8	--	103.4	103.8
	21:00	US	Conf. Board Present Situation	Mar	160.6	--	173.5	172.8
21:00	US	Richmond Fed Manufact. Index	Mar	2	12	16		
<b>Wed/27-Mar-19</b>	02:00	US	Fed's Daly to Discuss Managing Inflation in Current Climate					
	04:00	KR	Consumer Confidence	Mar	100	100.7	99.5	
	06:00	AU	RBA's Kent takes part in Sydney panel					
	08:00	NZ	RBNZ Official Cash Rate	Mar-27	1.75%	1.75%	1.75%	
	08:30	CN	Industrial Profits YoY	Feb	-14.0%	--	-1.9%	
	15:00	EZ	ECB President Mario Draghi Speaks in Frankfurt					
	15:00	EZ	ECB's Nowotny Speaks in Vienna					
	15:45	EZ	ECB Chief Economist Praet Speaks in Frankfurt					
	16:00	CH	Credit Suisse Survey Expectations	Mar	-26.9	--	-16.6	
	16:00	CH	KOF Institute Spring Economic Forecast					
	17:00	EZ	ECB's Lautenschlaeger Participates in Panel in Vienna					
	17:45	EZ	ECB Vice President de Guindos Speaks in Frankfurt					
	18:00	GB	CBI Retailing Reported Sales	Mar	-18	4	0	
	18:00	GB	CBI Total Dist. Reported Sales	Mar	-6	--	14	
	19:30	US	Trade Balance	Jan	-\$51.1b	-\$57.5b	-\$59.8b	-\$59.9b
	20:30	EZ	ECB Executive Board member Mersch Speaks in Frankfurt					
	21:00	US	Current Account Balance	4Q	-134.4b	-\$130.0b	-\$124.8b	-\$126.6b
	21:30	US	DOE Cushing OK Crude Inventory	Mar-22	541k	--	-468k	
	21:30	US	DOE U.S. Crude Oil Inventories	Mar-22	2800k	-2500k	-9589k	
	21:30	US	DOE U.S. Distillate Inventory	Mar-22	-2075k	--	-4127k	
21:30	US	DOE U.S. Gasoline Inventories	Mar-22	-2883k	--	-4587k		
23:00	US	Revisions: Industrial Production and Capacity Utilization						

Thu/28-Mar-19	00:30	EZ	ECB's Villeroy de Galhau Speaks in Geneva						
	04:00	KR	Business Survey Manufacturing	Apr		--		76	
	04:00	KR	Business Survey Non-Manufacturing	Apr		--		75	
	04:30	US	Fed's George Speaks to Money Marketeers of New York						
	07:00	NZ	ANZ Activity Outlook	Mar	6.3	--		10.5	
	07:00	NZ	ANZ Business Confidence	Mar	-38.0	--		-30.9	
	07:30	AU	Job vacancies	Feb	1.4%	--		1.3%	1.6%
	16:10	EZ	ECB's Guindos Speaks in Frankfurt						
	17:00	EZ	Business Climate Indicator	Mar	0.53	0.66		0.69	
	17:00	CA	CFIB Business Barometer	Mar	55.9	--		59	
	17:00	EZ	Consumer Confidence	Mar F	-7.2	-7.2		-7.4	
	17:00	EZ	Economic Confidence	Mar	105.5	105.9		106.1	106.2
	17:00	EZ	Industrial Confidence	Mar	-1.7	-0.5		-0.4	
	17:00	EZ	Services Confidence	Mar	11.3	12.0		12.1	
	18:15	US	Fed's Quarles Speaks at ECB Conference in Frankfurt						
	19:00	EZ	Dutch Central Bank Governor Klaas Knot Speaks in Amsterdam						
	19:30	US	Continuing Claims	Mar-16	1756k	1778k		1743k	
	19:30	US	Core PCE QoQ	4Q T	1.8%	1.7%		1.7%	
	19:30	US	GDP Annualized QoQ	4Q T	2.2%	2.3%		2.6%	
	19:30	US	GDP Price Index	4Q T	1.7%	1.8%		1.8%	
	19:30	US	Initial Jobless Claims	Mar-23	211k	220k		216k	
	19:30	US	Personal Consumption	4Q T	2.5%	2.6%		2.8%	
	19:40	EZ	Banque de France Governor Villeroy de Galhau Speaks in Paris						
	20:00	DE	CPI EU Harmonized MoM	Mar P	0.6%	0.7%		0.5%	
	20:00	DE	CPI EU Harmonized YoY	Mar P	1.5%	1.6%		1.7%	
	20:00	DE	CPI MoM	Mar P	0.4%	0.6%		0.4%	
	20:00	DE	CPI YoY	Mar P	1.3%	1.5%		1.5%	
	20:30	EZ	Federal Reserve Vice Chairman Clarida Speaks in Paris						
	20:30	US	Fed's Clarida Speaks at Bank of France Conference in Paris						
	21:00	US	Pending Home Sales MoM	Feb	-1.0%	0.5%		4.6%	4.3%
	21:00	US	Pending Home Sales NSA YoY	Feb	-5.0%	-3.0%		-3.2%	-3.3%
	22:00	US	Kansas City Fed Manf. Activity	Mar	17	--		1	
22:45	EZ	Irish central bank Deputy Governor Donnelly Speaks in Paris							
22:45	EZ	Riksbank Deputy Governor Skingsley Speaks in Paris							
Fri/29-Mar-19	00:15	US	Fed's Williams Visits Puerto Rico						
	04:00	NZ	ANZ Consumer Confidence Index	Mar	121.8	--		120.8	
	04:00	NZ	ANZ Consumer Confidence MoM	Mar	0.8%	--		-0.7%	
	04:20	US	Fed's Bullard Speaks at Madison, Wisconsin						
	06:00	KR	Cyclical Leading Index Change	Feb		--		-0.4	
	06:00	KR	Industrial Production SA MoM	Feb	-2.6%	-0.6%		0.5%	0.2%
	06:00	KR	Industrial Production YoY	Feb	-2.7%	-0.2%		0.1%	-0.2%
	06:30	JP	Jobless Rate	Feb	2.3%	2.5%		2.5%	
	06:30	JP	Job-To-Applicant Ratio	Feb	1.63	1.64		1.63	
	06:50	JP	Industrial Production MoM	Feb P	1.4%	1.4%		-3.4%	
	06:50	JP	Industrial Production YoY	Feb P	-1.0%	-1.0%		0.3%	
	06:50	JP	Retail Sales MoM	Feb P	0.2%	1.0%		-2.3%	-1.8%
	06:50	JP	Retail Trade YoY	Feb	0.4%	1.0%		0.6%	
	07:01	GB	GfK Consumer Confidence	Mar	-13	-14		-13	
	07:01	GB	Lloyds Business Barometer	Mar	10	--		4	
	07:30	AU	Private Sector Credit MoM	Feb	0.3%	0.2%		0.2%	
	07:30	AU	Private Sector Credit YoY	Feb	4.2%	4.3%		4.3%	
	N/A	CN	BoP Current Account Balance	4Q F		--		\$54.6b	
	12:00	JP	Construction Orders YoY	Feb	-3.4%	--		19.8%	
	14:00	GB	Nationwide House PX MoM	Mar	0.2%	0.0%		-0.1%	0.0%
	14:00	GB	Nationwide House Px NSA YoY	Mar	0.7%	0.6%		0.4%	
	14:00	DE	Retail Sales MoM	Feb	0.9%	-0.9%		3.3%	
	14:00	DE	Retail Sales YoY	Feb	4.7%	2.2%		2.6%	
	15:00	CH	KOF Leading Indicator	Mar	97.4	93.9		92.4	93.0
	15:55	DE	Unemployment Change (000's)	Mar	-7k	-10k		-21k	-20k
	15:55	DE	Unemployment Claims Rate SA	Mar	4.9%	4.9%		5.0%	
	16:30	GB	Consumer Credit YoY	Feb	6.3%	--		6.5%	
	16:30	GB	GDP QoQ	4Q F	0.2%	0.2%		0.2%	
	16:30	GB	GDP YoY	4Q F	1.4%	1.3%		1.3%	
	16:30	GB	Mortgage Approvals	Feb	64.3k	65.0k		66.8k	66.7k
	16:30	GB	Net Consumer Credit	Feb	1.145b	1.1b		1.1b	1.15b
	16:30	GB	Net Lending Sec. on Dwellings	Feb	3.5b	3.7b		3.7b	3.6b
16:30	GB	Total Business Investment QoQ	4Q F	-0.9%	-1.4%		-1.4%		
16:30	GB	Total Business Investment YoY	4Q F	2.5%	-3.7%		-3.7%		

	16:45	EZ	ECB Executive Board member Coeure Speaks in Paris					
	17:00	EZ	CPI Core YoY	Mar A		--	1.0%	
	17:00	EZ	CPI Estimate YoY	Mar		--	1.5%	
	19:30	CA	GDP MoM	Jan	0.3%	0.1%	-0.1%	
	19:30	CA	GDP YoY	Jan		--	1.1%	
	19:30	CA	Industrial Product Price MoM	Feb	0.3%	--	-0.3%	
	19:30	US	PCE Core MoM	Jan	0.1%	0.2%	0.2%	
	19:30	US	PCE Core YoY	Jan	1.8%	1.9%	1.9%	
	19:30	US	PCE Deflator MoM	Jan	-0.1%	0.0%	0.1%	
	19:30	US	PCE Deflator YoY	Jan	1.4%	1.4%	1.7%	
	19:30	US	Personal Income	Feb	0.2%	0.3%	-0.1%	
	19:30	US	Personal Spending	Jan	0.1%	0.3%	-0.5%	
	19:30	US	Real Personal Spending	Jan	0.1%	0.3%	-0.6%	
	20:45	US	Chicago Purchasing Manager	Mar	58.7	61	64.7	
	21:00	US	New Home Sales	Feb	667k	620k	607k	
	21:00	US	New Home Sales MoM	Feb	4.9%	2.1%	-6.9%	
	21:00	US	U. of Mich. 1 Yr Inflation	Mar F	2.5%	2.4%	2.4%	2.6%
	21:00	US	U. of Mich. 5-10 Yr Inflation	Mar F	2.5%	--	2.5%	
	21:00	US	U. of Mich. Current Conditions	Mar F	113.3	--	111.2	
	21:00	US	U. of Mich. Expectations	Mar F	88.8	--	89.2	
	21:00	US	U. of Mich. Sentiment	Mar F	98.4	97.8	97.8	
	23:45	US	Fed's Quarles Speaks in New York					
<b>Sat/30-Mar-19</b>	00:00	US	Baker Hughes U.S. Rig Count	Mar-29	1006	--	1016	
	N/A	GB	Parliament Brexit Vote					

DATE	WIB	CTY	INDICATORS	PER	ACTUAL	FORECAST	PREV.	REV.
<b>Mon/01-Apr-19</b>	04:30	AU	AiG Perf of Mfg Index	Mar		--	54	
	05:00	AU	CBA Australia PMI Mfg	Mar F		--	52	
	06:00	AU	CoreLogic House Px MoM	Mar		--	-0.9%	
	06:50	JP	Tankan Large All Industry Capex	1Q		0.8%	14.3%	
	06:50	JP	Tankan Large Mfg Index	1Q		13	19	
	06:50	JP	Tankan Large Mfg Outlook	1Q		13	15	
	06:50	JP	Tankan Large Non-Mfg Index	1Q		22	24	
	06:50	JP	Tankan Large Non-Mfg Outlook	1Q		20	20	
	06:50	JP	Tankan Small Mfg Index	1Q		9	14	
	06:50	JP	Tankan Small Mfg Outlook	1Q		6	8	
	06:50	JP	Tankan Small Non-Mfg Index	1Q		9	11	
	06:50	JP	Tankan Small Non-Mfg Outlook	1Q		5	5	
	07:00	KR	Exports YoY	Mar		-6.5%	-11.1%	
	07:00	KR	Imports YoY	Mar		-4.6%	-12.6%	
	07:00	AU	Melbourne Institute Inflation MoM	Mar		--	0.1%	
	07:00	AU	Melbourne Institute Inflation YoY	Mar		--	1.7%	
	07:00	KR	Trade Balance	Mar		\$5133m	\$3098m	
	07:30	AU	NAB Business Conditions	Mar		--	4	
	07:30	AU	NAB Business Confidence	Mar		--	2	
	07:30	JP	Nikkei Japan PMI Mfg	Mar F		--	48.9	
	07:30	KR	Nikkei South Korea PMI Mfg	Mar		--	47.2	
	08:45	CN	Caixin China PMI Mfg	Mar		50	49.9	
<b>01-Apr - 05-Apr</b>	N/A	JP	Official Reserve Assets	Mar		--	\$1281.8b	
	12:30	AU	Commodity Index AUD	Mar		--	129.7	
	12:30	AU	Commodity Index SDR YoY	Mar		--	9.1%	
	12:30	AU	Commodity Index SDR YoY	Mar		--	9.1%	
	13:30	CH	Retail Sales Real YoY	Feb		--	-0.4%	
	14:30	CH	PMI Manufacturing	Mar		--	55.4	
	14:55	DE	Markit/BME Germany Manufacturing PMI	Mar F		--	44.7	
	15:00	EZ	Markit Eurozone Manufacturing PMI	Mar F		--	47.6	
	15:30	GB	Markit UK PMI Manufacturing SA	Mar		--	52	
	15:30	HK	Retail Sales Value YoY	Feb		--	7.1%	
	15:30	HK	Retail Sales Volume YoY	Feb		--	6.9%	
	16:00	EZ	CPI Core YoY	Mar A		1.0%	1.0%	
	16:00	EZ	CPI Estimate YoY	Mar		1.5%	1.5%	
	16:00	EZ	Unemployment Rate	Feb		--	7.8%	
	19:30	CA	MLI Leading Indicator MoM	Feb		--	0.0%	
	19:30	US	Retail Sales Advance MoM	Feb		0.3%	0.2%	
	19:30	US	Retail Sales Control Group	Feb		0.2%	1.1%	
	19:30	US	Retail Sales Ex Auto and Gas	Feb		0.4%	1.2%	
	19:30	US	Retail Sales Ex Auto MoM	Feb		0.4%	0.9%	
	20:30	CA	Markit Canada Manufacturing PMI	Mar		--	52.6	
	20:45	US	Markit US Manufacturing PMI	Mar F		--	52.5	
	21:00	US	Business Inventories	Jan		0.4%	0.6%	

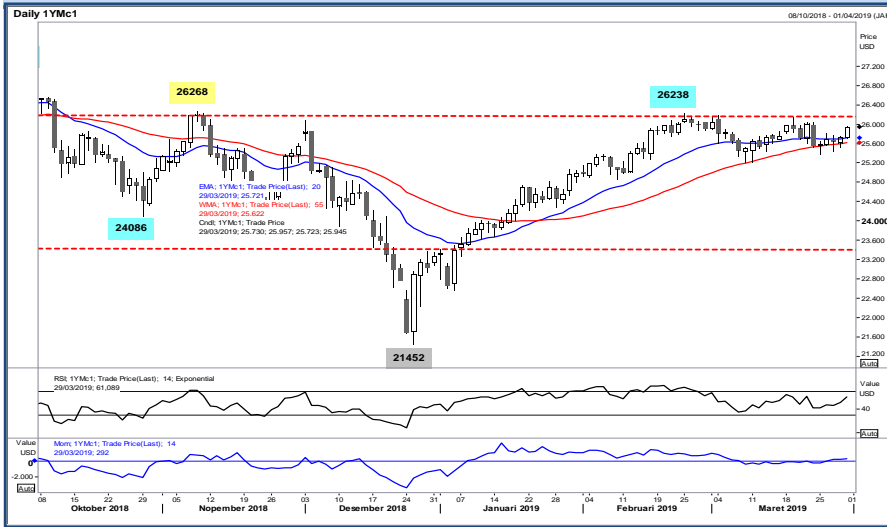
	21:00	US	Construction Spending MoM	Feb		-0.3%	1.3%	
	21:00	US	ISM Employment	Mar		--	52.3	
	21:00	US	ISM Manufacturing	Mar		54.2	54.2	
	21:00	US	ISM New Orders	Mar		--	55.5	
	21:00	US	ISM Prices Paid	Mar		--	49.4	
<b>Tue/02-Apr-19</b>	02:10	CA	Bank of Canada's Poloz Gives Speech in Iqaluit					
	06:00	KR	CPI Core YoY	Mar		--	1.3%	
	06:00	KR	CPI MoM	Mar		0.2%	0.4%	
	06:00	KR	CPI YoY	Mar		0.8%	0.5%	
	06:50	JP	Monetary Base End of period	Mar		--	¥497.3t	
	06:50	JP	Monetary Base YoY	Mar		--	4.6%	
	07:30	AU	Building Approvals MoM	Feb		--	2.5%	
	07:30	AU	Building Approvals YoY	Feb		--	-28.6%	
	10:30	AU	RBA Cash Rate Target	Apr-02		1.5%	1.5%	
	13:30	CH	CPI Core YoY	Mar		--	0.4%	
	13:30	CH	CPI EU Harmonized MoM	Mar		--	0.3%	
	13:30	CH	CPI EU Harmonized YoY	Mar		--	0.7%	
	13:30	CH	CPI MoM	Mar		--	0.4%	
	13:30	CH	CPI YoY	Mar		--	0.6%	
	15:30	GB	Markit/CIPS UK Construction PMI	Mar		--	49.5	
	16:00	EZ	PPI MoM	Feb		--	0.4%	
	16:00	EZ	PPI YoY	Feb		--	3.0%	
	19:30	US	Cap Goods Orders Nondef Ex Air	Feb P		--	0.8%	
	19:30	US	Cap Goods Ship Nondef Ex Air	Feb P		--	0.8%	
	19:30	US	Durable Goods Orders	Feb P		-1.5%	0.3%	
	19:30	US	Durables Ex Transportation	Feb P		0.2%	-0.2%	
<b>Wed/03-Apr-19</b>	04:00	KR	Foreign Reserves	Mar		--	\$404.67b	
	04:30	AU	AiG Perf of Services Index	Mar		--	44.5	
	05:00	AU	CBA Australia PMI Composite	Mar F		--	50	
	05:00	AU	CBA Australia PMI Services	Mar F		--	49.8	
	07:30	HK	Nikkei Hong Kong PMI	Mar		--	48.4	
	07:30	JP	Nikkei Japan PMI Composite	Mar		--	50.7	
	07:30	JP	Nikkei Japan PMI Services	Mar		--	52.3	
	07:30	AU	Retail Sales MoM	Feb		--	0.1%	
	07:30	AU	Trade Balance	Feb		--	A\$4549m	
	08:45	CN	Caixin China PMI Composite	Mar		--	50.7	
	08:45	CN	Caixin China PMI Services	Mar		52	51.1	
	14:55	DE	Markit Germany Services PMI	Mar F		--	54.9	
	14:55	DE	Markit/BME Germany Composite PMI	Mar F		--	51.5	
	15:00	EZ	Markit Eurozone Composite PMI	Mar F		--	51.3	
	15:00	EZ	Markit Eurozone Services PMI	Mar F		--	52.7	
	15:30	GB	Markit/CIPS UK Composite PMI	Mar		--	51.5	
	15:30	GB	Markit/CIPS UK Services PMI	Mar		--	51.3	
	15:30	GB	Official Reserves Changes	Mar		--	\$73m	
	16:00	EZ	Retail Sales MoM	Feb		--	1.3%	
	16:00	EZ	Retail Sales YoY	Feb		--	2.2%	
	19:15	US	ADP Employment Change	Mar		160k	183k	
	19:30	US	Fed's Bostic Speaks at American Banker Association Summit					
	20:45	US	Markit US Composite PMI	Mar F		--	54.3	
	20:45	US	Markit US Services PMI	Mar F		--	54.8	
	21:00	US	ISM Non-Manufacturing Index	Mar		58	59.7	
	21:30	US	DOE Cushing OK Crude Inventory	Mar-29		--	541k	
	21:30	US	DOE U.S. Crude Oil Inventories	Mar-29		--	2800k	
	21:30	US	DOE U.S. Distillate Inventory	Mar-29		--	-2075k	
	21:30	US	DOE U.S. Gasoline Inventories	Mar-29		--	-2883k	
<b>Thu/04-Apr-19</b>	04:00	US	Fed's Kashkari Speaks in North Dakota					
	06:00	KR	BoP Current Account Balance	Feb		--	\$2772.3m	
	06:00	KR	BoP Goods Balance	Feb		--	\$5609.5m	
	13:00	DE	Factory Orders MoM	Feb		--	-2.6%	
	13:00	DE	Factory Orders WDA YoY	Feb		--	-3.9%	
	14:30	DE	Markit Germany Construction PMI	Mar		--	54.7	
	19:30	US	Continuing Claims	Mar-23		--	--	
	19:30	US	Initial Jobless Claims	Mar-30		--	--	
	21:00	CA	Ivey Purchasing Managers Index SA	Mar		--	50.6	
<b>Fri/05-Apr-19</b>	00:00	US	Fed's Mester Speaks at Banking Conference					
	04:30	AU	AiG Perf of Construction Index	Mar		--	43.8	
	06:30	JP	Household Spending YoY	Feb		--	2.0%	
	All	CN	<b>Bank Holiday (Tomb-Sweeping Day)</b>					
	07:00	JP	Labor Cash Earnings YoY	Feb		--	1.2%	
	07:00	JP	Real Cash Earnings YoY	Feb		--	1.1%	

	12:00	JP	Coincident Index	Feb P		--	98.1	
	12:00	JP	Leading Index CI	Feb P		--	96.5	
	12:30	AU	Foreign Reserves	Mar		--	A\$68.5b	
	13:00	DE	Industrial Production SA MoM	Feb		--	-0.8%	
	13:00	DE	Industrial Production WDA YoY	Feb		--	-3.3%	
	14:00	CH	Foreign Currency Reserves	Mar		--	738.8b	
05-Apr - 09-Apr	N/A	GB	Halifax House Price 3Mths/Year	Mar		--	2.8%	
05-Apr - 09-Apr	N/A	GB	Halifax House Prices MoM	Mar		--	5.9%	
	15:30	GB	Unit Labor Costs YoY	4Q		--	2.8%	
	19:30	CA	Full Time Employment Change	Mar		--	67.4	
	19:30	CA	Hourly Wage Rate Permanent Employees YoY	Mar		--	2.2%	
	19:30	CA	Net Change in Employment	Mar		-10.0k	55.9k	
	19:30	CA	Part Time Employment Change	Mar		--	-11.6	
	19:30	CA	Participation Rate	Mar		65.7	65.8	
	19:30	CA	Unemployment Rate	Mar		5.8%	5.8%	
	19:30	US	Average Hourly Earnings MoM	Mar		0.2%	0.4%	
	19:30	US	Average Hourly Earnings YoY	Mar		3.4%	3.4%	
	19:30	US	Average Weekly Hours All Employees	Mar		34.5	34.4	
	19:30	US	Change in Manufact. Payrolls	Mar		10k	4k	
	19:30	US	Change in Nonfarm Payrolls	Mar		175k	20k	
	19:30	US	Change in Private Payrolls	Mar		175k	25k	
	19:30	US	Labor Force Participation Rate	Mar		--	63.2%	
	19:30	US	Two-Month Payroll Net Revision	Mar		--	--	
	19:30	US	Underemployment Rate	Mar		--	7.3%	
	19:30	US	Unemployment Rate	Mar		3.8%	3.8%	
<b>Sat/06-Apr-19</b>	00:00	US	Baker Hughes U.S. Rig Count	Apr-05		--	--	
	02:00	US	Consumer Credit	Feb		\$17.750b	\$17.049b	
	02:30	US	Fed's Bostic Discusses Disruption and Opportunity					



### Dow Jones (1YMM9 – Jun)

Exp. Date: 21 Jun 2019



RESISTANCE	26276	
	26120	
	26035	
SUPPORT	25794	
	25638	
	25553	
SUGGESTION	BUY	25920
	SELL	---
	S/L	25790
	T/P:	26120 26220

DATE	OPEN	HIGH	LOW	RANGE	CLOSE	SETTLE	CHANGE	CHANGE %	VOLUME
29 Mar	25730	25964	25723	241	25950	25950	↑ 213	0.83	191038

WEEKLY		MARCH		2019	
HIGH	LOW	HIGH	LOW	HIGH	LOW
25964 (29/Mar)	25377 (25/Mar)	26171 (04/Mar)	25213 (08/Mar)	26238 (25/Feb)	22563 (04/Jan)

### Nikkei (SSlamM9 – Jun)

Last Trading Date: 17 Jun 2019



RESISTANCE	21525	
	21415	
	21360	
SUPPORT	21195	
	21085	
	21030	
SUGGESTION	BUY	21275
	SELL	---
	S/L	21145
	T/P:	21475 21575

DATE	OPEN	HIGH	LOW	RANGE	CLOSE	SETTLE	CHANGE	CHANGE%	VOLUME
29 Mar SS1pmM9	21205	21305	21160	145	21305	---	↑ 95	0.45	22599
29 Mar SS1amM9	21240	21280	21140	140	21210	21210	↑ 135	0.64	50238

WEEKLY		MARCH		2019	
HIGH	LOW	HIGH	LOW	HIGH	LOW
21390 (27/Mar)	20680 (25/Mar)	21865 (04/Mar)	20645 (08/Mar)	21865 (04/Mar)	19205 (04/Jan)



### Kospi 200 (KSM9 – Jun)

Exp. Date: 13 Jun 2019



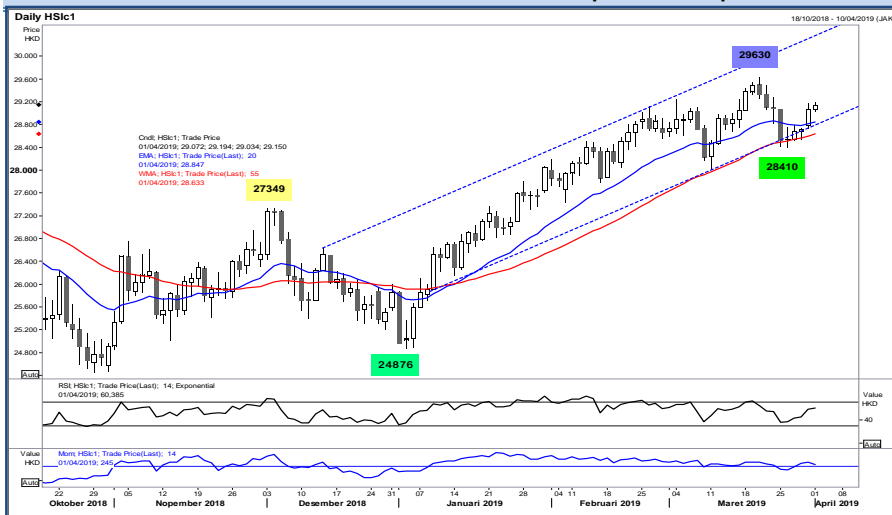
RESISTANCE	280.58	
	279.26	
	278.23	
SUPPORT	275.88	
	274.56	
	273.53	
SUGGESTION	BUY	277.70
	SELL	---
	S/L	276.40
	T/P:	279.70 281.20

DATE	OPEN	HIGH	LOW	RANGE	CLOSE	SETTLE	CHANGE	CHANGE %	VOLUME
29 Mar	276.60	277.95	275.60	2.35	277.20	277.20	↑ 0.80	0.29	168537

WEEKLY		MARCH		2019	
HIGH	LOW	HIGH	LOW	HIGH	LOW
280.00 (25/Mar)	274.90 (28/Mar)	287.15 (04/Mar)	273.95 (13/Mar)	290.80 (25/Feb)	255.60 (04/Jan)

### Hang Seng (HSI19 – Apr)

Exp. Date: 29 Apr 2019



RESISTANCE	29737	
	29459	
	29327	
SUPPORT	28917	
	28639	
	28507	
SUGGESTION	BUY	29245
	SELL	---
	S/L	29095
	T/P:	29445 29595

DATE	OPEN	HIGH	LOW	RANGE	CLOSE	SETTLE	CHANGE	CHANGE %	VOLUME
29 Mar	28823	29181	28771	410	29076	29076	↑ 311	1.08	198927

WEEKLY		MARCH		2019	
HIGH	LOW	HIGH	LOW	HIGH	LOW
29181 (29/Mar)	28410 (26/Mar)	29541 (19/Mar)	28089 (11/Mar)	29541 (19/Mar)	24876 (03/Jan)



**DISCLAIMER:**

*The information contained above is intended to provide general information and does not constitute or purports to be a financial advice, investment advice, trading advice, or any other advice. Any strategies, views or opinions expressed above are not intended to be presented as an offer or solicitation for the purchase or sale of any financial instrument. Client should seek personal professional advice before making any decisions. The client should ensure that financial instruments are suitable for his/her own individual objectives, financial situation and investment needs. This report is prepared for the use of Alpha Gold Futures clients. The reproduction and redistribution of this material is strictly prohibited*