

## Daily Outlook

### GLOBAL STOCK INDEX

#### DJIA

**Wall Street's major indexes** charged higher on Friday, as sharply slowing U.S. job growth boosted hopes for Federal Reserve interest rate cuts while optimism about potential progress in U.S. trade fights with China and Mexico added to risk appetites.

Investors bet that labor market weakness would give the Fed a reason to provide the economy with more support, pushing the S&P 500 and the Dow to their biggest weekly gains since the end of November, right before a massive year-end sell-off.

A Labor Department report showed nonfarm payrolls increased by 75,000 jobs last month, much smaller than the 185,000 additions estimated by economists in a Reuters poll, suggesting the loss of momentum in economic activity was spreading to the labor market.

As a result traders raised bets for a rate cut in July followed by two more rate cuts by year-end. But others noted that investors appeared to give more weight to Fed policy than economic data.

The Dow Jones Industrial Average rose 263.28 points, or 1.02%, to 25,983.94, the S&P 500 gained 29.85 points, or 1.05%, to 2,873.34 and the Nasdaq Composite added 126.55 points, or 1.66%, to 7,742.10.

Also adding to investor enthusiasm on Friday was a notice from U.S. officials granting Chinese exporters two more weeks to get their products to the United States before raising tariffs on those items. U.S. and Chinese leaders are expected to meet late in June at the G20 meeting.

But while U.S. President Donald Trump said there was a "good chance" of a US-Mexico trade deal, if the two countries failed to make an agreement he plans to impose a 5% tariff on Mexican imports on Monday.

Mexican sources told Reuters late Friday that negotiators are battling to reach agreement over a U.S. demand that Mexico accept more asylum seekers.

The S&P's biggest boosts on the day were Microsoft Corp, Apple Inc and Amazon.com. Technology stocks, among the hardest hit due to the recent escalation in trade tensions, rose 2% and provided the biggest boost of the S&P 500's 11 major sectors. Chipmakers, which get a major portion of their revenue from China, also gained, with the Philadelphia chip index rising 1.2%.

However, tariff-sensitive industrials underperformed slightly with a 0.9% gain.

Interest-rate sensitive bank stocks dropped 0.98%. The only major S&P sectors in the red were the broader financial index, down 0.19%, and a defensive favorite, utilities, which fell 0.77%.

Beyond Meat Inc shares closed up 39.4% at \$138.65 after the maker of plant-based burgers said it expects to more than double its revenue and report breakeven EBITDA this year. It went public at \$25 on May 2.

Advancing issues outnumbered declining ones on the NYSE by a 3.10-to-1 ratio; on Nasdaq, a 1.93-to-1 ratio favored advancers.

The S&P 500 posted 116 new 52-week highs and no new lows; the Nasdaq Composite recorded 100 new highs and 99 new lows.

On U.S. exchanges 6.48 billion shares changed hands compared with the 7.04 billion average for the last 20 sessions.

#### Nikkei

**Japan's Nikkei** rose on Friday as reports that Washington is considering a delay in tariffs on Mexican imports eased wider concerns about weakening global trade.

The Nikkei share average ended 0.5% higher at 20,884.71. For the week, the index rose 1.4%.

Investor sentiment recovered slightly after Mexican and U.S. officials held a second day of talks on trade and migration on Thursday, amid reports President Donald Trump might delay the imposition of tariffs that are due on Monday.

But trading was thin as most investors stayed on the sidelines ahead of a U.S. jobs report that will probably do little to dial back market expectations that the Federal Reserve will cut rates this year.

Turnover on the mainboard was 1.6 trillion yen, the lowest level in nearly two weeks.

Cyclical stocks, such as those in chip-related sectors, were in demand, with Advantest Corp up 5.1% and Tokyo Electron rising 2.8%. Other exporters also gained, with TDK Corp up 2.3% and Fanuc Corp adding 1%.

Hitachi High-Technologies jumped nearly 15% to a daily limit-high of 5,450 yen after the Nikkei business newspaper reported that parent Hitachi Ltd is considering turning the company into a 100% subsidiary. Hitachi Ltd said it is considering various options to raise the company's value but nothing has been decided at this point. The broader Topix rose 0.5% to 1,532.39.

#### Kospi

**South Korea's KOSPI stock index** pared early gains to close a tick higher on Friday after the yuan slipped on China central bank chief's remarks about temporary trade war effect on their currency. The won and the benchmark bond yield weakened.

The Seoul stock market's main KOSPI ended up 3.22 points or 0.16% at 2,072.33 points. The KOSPI has

gained 1.50% for the week. Foreigners sold for three consecutive sessions; they were net sellers of 33.7 billion won (\$28.52 million) worth of shares on the main board. The won was quoted at 1,181.4 per dollar on the onshore settlement platform, 0.24% lower than its previous close at 1,178.6. In offshore trading, the won was quoted at 1,181.7 per U.S. dollar, down 0.3% from the previous session, while in non-deliverable forward trading its one-month contract was quoted at 1,180.4 per dollar. MSCI's broadest index of Asia-Pacific shares outside Japan was up 0.11%, after U.S. stocks closed higher. Japanese stocks rose 0.53%. The KOSPI rose 1.53% so far this year, and lost 6.7% in the previous 30 trading sessions. The current price-to-earnings ratio is 12.10, the dividend yield is 1.28% and the market capitalisation is 1,242.04 trillion won. The trading volume during the session on the KOSPI index was 357.53 million shares and, of the total traded issues of 890, the number of advancing shares was 565. The won lost 5.6% against the U.S dollar so far this year. In money and debt markets, June futures on three-year treasury bonds dipped 0.01 points to 110.12, while the 3-month Certificate of Deposit rate was quoted at 1.82%. The most liquid 3-year Korean treasury bond yield fell by 0.7 basis points to 1.535%, while the benchmark 10-year yield dropped by 0.4 basis points to 1.650%.

**Hang Seng & Shanghai**

**Financial markets in mainland China and Hong Kong close on Friday for the Dragon Boat Festival. Trading will resume on Monday.**

**Closing Prices – 07 June 2019**

	CLOSE	CHANGE		CLOSE	CHANGE
.DJI	25983.94	↑ 263.28/1.02%	.N225	20884.71	↑ 110.67/0.53%
/.SPX	2873.34	↑ 29.85/1.05%	.KS200	268.27	↑ 0.28/0.10%
/.IXIC	7742.101	↑ 126.548/1.66%	.HSI	HOLIDAY	↓ 132.34/0.49%
JPY=	108.18	↑ 0.04/0.04%	/.SSEC	HOLIDAY	↓ 27.80060/0.96%
KRW=	1181.07	↑ 3.51/0.29%	/CLc1 (Oil)	54.04	↑ 1.09/2.06%

**ECONOMIC INDICATORS**

DATE	WIB	CTY	INDICATORS	PER	ACTUAL	FORECAST	PREV.	REV.
28-May - 03-Jun	N/A	GB	Nationwide House PX MoM	May		0.0%	0.4%	
28-May - 03-Jun	N/A	GB	Nationwide House Px NSA YoY	May		1.2%	0.9%	
01-Jun - 10-Jun	N/A	GB	BoE/TNS Inflation Next 12 Mths	May		--	3.2%	
<b>Mon/03-Jun-19</b>	All	NZ	<b>Bank Holiday (Queen's Birthday)</b>					
	05:30	AU	AiG Perf of Mfg Index	May	52.7	--	54.8	
	06:00	AU	CBA Australia PMI Mfg	May F	51.0	--	51.1	
	06:50	JP	Capital Spending Ex Software YoY	1Q	6.9%	2.3%	5.5%	
	06:50	JP	Capital Spending YoY	1Q	6.1%	2.6%	5.7%	
	06:50	JP	Company Profits YoY	1Q	10.3%	--	-7.0%	
	06:50	JP	Company Sales YoY	1Q	3.0%	--	3.7%	
03-Jun - 07-Jun	N/A	JP	Official Reserve Assets	May		--	\$1293.5b	
	07:00	AU	CoreLogic House Px MoM	May	-0.4%	--	-0.5%	
	07:30	JP	Nikkei Japan PMI Mfg	May F	49.8	--	49.6	
	07:30	KR	Nikkei South Korea PMI Mfg	May	48.4	49.8	50.2	
	08:00	AU	Melbourne Institute Inflation MoM	May	0.0%	--	0.2%	
	08:00	AU	Melbourne Institute Inflation YoY	May	1.7%	--	1.8%	
	08:30	AU	Inventories SA QoQ	1Q	0.7%	0.0%	-0.2%	
	08:45	CN	Caixin China PMI Mfg	May	50.2	50	50.2	
	13:30	CH	CPI Core YoY	May	0.6%	--	0.5%	
	13:30	CH	CPI EU Harmonized MoM	May	-0.2%	--	0.6%	
	13:30	CH	CPI EU Harmonized YoY	May	0.5%	--	1.1%	
	13:30	CH	CPI MoM	May	0.3%	0.3%	0.2%	
	13:30	CH	CPI YoY	May	0.6%	0.6%	0.7%	
	14:30	CH	PMI Manufacturing	May	48.6	48.8	48.5	
	14:55	DE	Markit/BME Germany Manufacturing PMI	May F	44.3	44.3	44.3	
	15:00	EZ	Markit Eurozone Manufacturing PMI	May F	47.7	47.7	47.7	
03-Jun - 07-Jun	N/A	GB	Govt. to introduce Withdrawal Agreement Bill to Parliament					
	15:30	GB	Markit UK PMI Manufacturing SA	May	49.4	52.2	53.1	
	19:30	CA	MLI Leading Indicator MoM	Apr	0.4%	--	0.2%	0.1%
	20:30	CA	Markit Canada Manufacturing PMI	May	49.1	--	49.7	
	20:45	US	Markit US Manufacturing PMI	May F	50.5	50.6	50.6	
	21:00	US	Construction Spending MoM	Apr	0.0%	0.4%	-0.9%	
	21:00	US	ISM Employment	May	53.7	--	52.4	
	21:00	US	ISM Manufacturing	May	52.1	53.0	52.8	
	21:00	US	ISM New Orders	May	52.7	--	51.7	
	21:00	US	ISM Prices Paid	May	53.2	51	50	
	23:40	US	Fed's Barkin Speaks to Charlotte Economics Club					
<b>Tue/04-Jun-19</b>	00:25	US	Fed's Bullard Speaks in Chicago					
	06:00	KR	CPI Core YoY	May		--	0.9%	
	06:00	KR	CPI MoM	May	0.2%	0.2%	0.4%	
	06:00	KR	CPI YoY	May	0.7%	0.7%	0.6%	
	06:00	KR	GDP SA QoQ	1Q F	-0.4%	-0.3%	-0.3%	-0.9%
	06:00	KR	GDP YoY	1Q F	1.7%	1.8%	1.8%	2.9%
	06:50	JP	Monetary Base End of period	May	¥511.8t	--	¥514.6t	
	06:50	JP	Monetary Base YoY	May	3.6%	--	3.1%	
	08:30	AU	BoP Current Account Balance	1Q	-A\$2.9b	-A\$2.9b	-A\$7.2b	-A\$6.3b
	08:30	AU	Net Exports of GDP	1Q	0.2	0.2	-0.2	
	08:30	AU	Retail Sales MoM	Apr	-0.1%	0.2%	0.3%	
	11:30	AU	RBA Cash Rate Target	Jun-04	1.25%	1.25%	1.5%	
	15:30	GB	Markit/CIPS UK Construction PMI	May	48.6	50.6	50.5	
	16:00	EZ	CPI Core YoY	May A	0.8%	0.9%	1.3%	
	16:00	EZ	CPI Estimate YoY	May	1.2%	1.3%	1.7%	
	16:00	EZ	Unemployment Rate	Apr	7.6%	7.7%	7.7%	
	16:30	AU	RBA Governor Lowe Gives Speech in Sydney					
	19:30	US	Fed's Williams Speaks at Conference on Reforming Bank Culture					
	20:45	US	Powell Gives Welcoming Remarks at Fed Framework Conference					
	21:00	US	Cap Goods Orders Nondef Ex Air	Apr F	-1.0%	--	-0.9%	
	21:00	US	Cap Goods Ship Nondef Ex Air	Apr F	0.0%	--	0.0%	
	21:00	US	Durable Goods Orders	Apr F	-2.1%	--	-2.1%	
	21:00	US	Durables Ex Transportation	Apr F	0.0%	--	0.0%	
	21:00	US	Factory Orders	Apr	-1.0%	-0.8%	1.9%	
	21:00	US	Factory Orders Ex Trans	Apr	-0.3%	--	0.8%	

<b>Wed/05-Jun-19</b>	04:00	KR	Foreign Reserves	May	\$401.97b	--	\$404.03b	
	05:30	AU	AiG Perf of Services Index	May	52.5	--	46.5	
	06:00	KR	BoP Current Account Balance	Apr	\$-0.66b	\$1.1b	\$4819.6m	
	06:00	KR	BoP Goods Balance	Apr		--	\$8467.3m	
	06:00	AU	CBA Australia PMI Composite	May F	51.5	--	52.2	
	06:00	AU	CBA Australia PMI Services	May F	51.5	--	52.3	
	07:30	HK	Nikkei Hong Kong PMI	May		--	48.4	
	07:30	JP	Nikkei Japan PMI Composite	May	50.7	--	50.8	
	07:30	JP	Nikkei Japan PMI Services	May	51.7	52	51.8	
	08:30	AU	GDP SA QoQ	1Q	0.4%	0.5%	0.2%	
	08:30	AU	GDP YoY	1Q	1.8%	1.8%	2.3%	
	08:30	AU	RBA's Heath Speaks in Perth					
	08:45	CN	Caixin China PMI Composite	May	51.5	--	52.7	
	08:45	CN	Caixin China PMI Services	May	52.7	54.2	54.5	
	14:55	DE	Markit Germany Services PMI	May F	55.4	55	55	
	14:55	DE	Markit/BME Germany Composite PMI	May F	52.6	52.4	52.4	
	15:00	GB	BOE's Dave Ramsden speak in London.					
	15:00	EZ	Markit Eurozone Composite PMI	May F	51.8	51.6	51.6	
	15:00	EZ	Markit Eurozone Services PMI	May F	52.9	52.5	52.5	
	15:30	GB	Markit/CIPS UK Composite PMI	May	50.7	51.0	50.9	
	15:30	GB	Markit/CIPS UK Services PMI	May	51.0	50.6	50.4	
	15:30	GB	Official Reserves Changes	May		--	\$1517m	
	16:00	EZ	PPI MoM	Apr	-0.3%	0.2%	-0.1%	
	16:00	EZ	PPI YoY	Apr	2.6%	3.1%	2.9%	
	16:00	EZ	Retail Sales MoM	Apr	-0.4%	-0.5%	0.0%	
	16:00	EZ	Retail Sales YoY	Apr	1.5%	1.5%	1.9%	2.0%
	19:15	US	ADP Employment Change	May	27k	183k	275k	271k
	19:30	CA	Labor Productivity QoQ	1Q	0.3%	0.4%	-0.4%	
	20:45	US	Fed's Clarida Gives Welcoming Remarks at Fed Conference					
	20:45	US	Markit US Composite PMI	May F	50.9	50.9	50.9	
	20:45	US	Markit US Services PMI	May F	50.9	50.9	50.9	
	21:00	US	ISM Non-Manufacturing Index	May	56.9	55.4	55.5	
	21:30	US	DOE Cushing OK Crude Inventory	May-31	179k	--	-16k	
	21:30	US	DOE U.S. Crude Oil Inventories	May-31	6771k	-1559k	-282k	
	21:30	US	DOE U.S. Distillate Inventory	May-31	4572k	--	-1615k	
	21:30	US	DOE U.S. Gasoline Inventories	May-31	3205k	--	2204k	
	22:00	US	Fed's Bostic Speaks on Housing Panel in Atlanta					
<b>Thu/06-Jun-19</b>	01:00	US	U.S. Federal Reserve Releases Beige Book					
	All	KR	<b>Bank Holiday (Memorial Day)</b>					
	08:30	AU	Trade Balance	Apr	A\$4871m	A\$5000m	A\$4949m	
	N/A	HK	Foreign Reserves	May		--	\$436.4b	
	13:00	DE	Factory Orders MoM	Apr	0.3%	0.0%	0.6%	0.8%
	13:00	DE	Factory Orders WDA YoY	Apr	-5.3%	-5.9%	-6.0%	-5.9%
	14:30	DE	Markit Germany Construction PMI	May	51.4	--	53	
	15:25	JP	BOJ Kuroda speaks in Tokyo at 2019 IIF Spring Membership Meeti					
	16:00	GB	BOE Governor Mark Carney speaks in Tokyo.					
	16:00	EZ	Employment QoQ	1Q F	0.3%	--	0.3%	
	16:00	EZ	Employment YoY	1Q F	1.3%	--	1.3%	
	16:00	EZ	GDP SA QoQ	1Q F	0.4%	0.4%	0.4%	
	16:00	EZ	GDP SA YoY	1Q F	1.2%	1.2%	1.2%	
	16:00	EZ	Govt Expend QoQ	1Q	0.1%	0.0%	0.7%	0.6%
	16:00	EZ	Gross Fix Cap QoQ	1Q	1.1%	0.5%	0.6%	1.4%
	16:00	EZ	Household Cons QoQ	1Q	0.5%	0.6%	0.2%	0.3%
	18:45	EZ	ECB Deposit Facility Rate	Jun-06	-0.4%	-0.4%	-0.4%	
	18:45	EZ	ECB Main Refinancing Rate	Jun-06	0.0%	0.0%	0.0%	
	18:45	EZ	ECB Marginal Lending Facility	Jun-06	0.25%	0.25%	0.25%	
	19:30	US	Continuing Claims	May-25	1682k	1662k	1664k	
	19:30	EZ	ECB's Draghi Speaks After Policy Decision					
	19:30	US	Initial Jobless Claims	Jun-01	218k	215k	215k	
	19:30	US	Nonfarm Productivity	1Q F	3.4%	3.5%	3.6%	
	19:30	US	Revisions: Trade Balance					
	19:30	US	Trade Balance	Apr	-\$50.8b	-\$50.6b	-\$50.0b	-\$51.9b
	19:30	US	Unit Labor Costs	1Q F	-1.6%	-0.9%	-0.9%	
	19:40	US	Fed's Kaplan Speaks at Boston College					
	21:00	CA	Ivey Purchasing Managers Index SA	May	55.9	--	55.9	
	23:00	US	Household Change in Net Worth	1Q	-\$4691b	--	-\$3730b	-\$3960b
<b>Fri/07-Jun-19</b>	00:00	US	Fed's Williams Discusses International Economics					
	All	HK	<b>Bank Holiday (Tuen Ng Festival)</b>					
	All	CN	<b>Bank Holiday (Dragon Boat Festival)</b>					
	05:30	AU	AiG Perf of Construction Index	May	40.4	--	42.6	

	06:30	JP	Household Spending YoY	Apr	1.3%	2.7%	2.1%	
	06:30	JP	Labor Cash Earnings YoY	Apr	-0.1%	-0.7%	-1.9%	-1.3%
	06:30	JP	Real Cash Earnings YoY	Apr	-1.1%	-1.5%	-2.5%	-1.9%
	08:30	AU	Home Loans MoM	Apr	-1.1%	0.0%	-2.8%	-2.6%
	08:30	AU	Investment Lending	Apr	-2.2%	1.0%	-2.7%	-2.4%
	08:30	AU	Owner-Occupier Loan Value MoM	Apr	1.0%	0.0%	-3.4%	-3.1%
	N/A	CN	Foreign Reserves	May		\$3089.50b	\$3094.95b	
	12:00	JP	Coincident Index	Apr P	101.9	100.2	99.4	
	12:00	JP	Leading Index CI	Apr P	95.5	96.0	95.9	
	12:45	CH	Unemployment Rate	May	2.3%	2.3%	2.4%	
	12:45	CH	Unemployment Rate SA	May	2.4%	2.4%	2.4%	
	13:00	DE	Current Account Balance	Apr	22.6b	--	30.2b	
	13:00	DE	Exports SA MoM	Apr	-3.7%	-0.9%	1.5%	1.6%
	13:00	DE	Imports SA MoM	Apr	1.3%	-0.2%	0.4%	0.7%
	13:00	DE	Industrial Production SA MoM	Apr	-1.9%	-0.5%	0.5%	
	13:00	DE	Industrial Production WDA YoY	Apr	-1.8%	-0.4%	-0.9%	
	13:00	DE	Labor Costs SA QoQ	1Q		--	-0.1%	
	13:00	DE	Labor Costs WDA YoY	1Q		--	2.0%	
	13:00	DE	Trade Balance	Apr	17.0b	19.5b	22.7b	22.6b
	13:30	AU	Foreign Reserves	May	A\$75.7b	--	A\$75.7b	
	14:00	CH	Foreign Currency Reserves	May	759.9b	--	771.6b	772.0b
	14:30	GB	Halifax House Price 3Mths/Year	May	5.2%	5.0%	5.0%	
	14:30	GB	Halifax House Prices MoM	May	0.5%	0.0%	1.1%	1.2%
	19:30	US	Average Hourly Earnings MoM	May	0.2%	0.3%	0.2%	
	19:30	US	Average Hourly Earnings YoY	May	3.2%	3.2%	3.2%	
	19:30	US	Average Weekly Hours All Employees	May	34.4	34.5	34.4	
	19:30	CA	Capacity Utilization Rate	1Q	80.9%	81.1%	81.7%	81.8%
	19:30	US	Change in Manufact. Payrolls	May	3k	3k	4k	5k
	19:30	US	Change in Nonfarm Payrolls	May	75k	175k	263k	224k
	19:30	US	Change in Private Payrolls	May	90k	174k	236k	205k
	19:30	CA	Full Time Employment Change	May	27.7k	9k	73k	
	19:30	CA	Hourly Wage Rate Permanent Employees YoY	May	2.6%	2.4%	2.6%	
	19:30	US	Labor Force Participation Rate	May	62.8%	--	62.8%	
	19:30	CA	Net Change in Employment	May	27.7k	5.0k	106.5k	
	19:30	CA	Part Time Employment Change	May	0.0k	0.5k	33.6	
	19:30	CA	Participation Rate	May	65.7	65.8	65.9	
	19:30	US	Two-Month Payroll Net Revision	May	-75k	--	16k	
	19:30	US	Underemployment Rate	May	7.1%	--	7.3%	
	19:30	CA	Unemployment Rate	May	5.4%	5.7%	5.7%	
	19:30	US	Unemployment Rate	May	3.6%	3.6%	3.6%	
	21:00	US	Wholesale Inventories MoM	Apr F	0.8%	0.7%	0.7%	
	21:00	US	Wholesale Trade Sales MoM	Apr	-0.4%	0.2%	2.3%	
<b>Sat/08-Jun-19</b>	00:00	US	Baker Hughes U.S. Rig Count	Jun-07	975	--	984	
	02:00	US	Consumer Credit	Apr	\$17.497b	\$13.000b	\$10.281b	\$11.031b

DATE	WIB	CTY	INDICATORS	PER	ACTUAL	FORECAST	PREV.	REV.
01-Jun - 10-Jun	N/A	GB	BoE/TNS Inflation Next 12 Mths	May		--	3.2%	
<b>Mon/10-Jun-19</b>	All	AU	<b>Bank Holiday (Queen's Birthday)</b>					
	06:50	JP	Bank Lending Ex-Trusts YoY	May		--	2.5%	
	06:50	JP	Bank Lending Incl Trusts YoY	May		--	2.4%	
	06:50	JP	BoP Current Account Adjusted	Apr P		--	¥1271.0b	
	06:50	JP	BoP Current Account Balance	Apr P		--	¥2847.9b	
	06:50	JP	GDP Annualized SA QoQ	1Q F		--	2.1%	
	06:50	JP	GDP Business Spending QoQ	1Q F		--	-0.3%	
	06:50	JP	GDP Deflator YoY	1Q F		--	0.2%	
	06:50	JP	GDP Nominal SA QoQ	1Q F		--	0.8%	
	06:50	JP	GDP Private Consumption QoQ	1Q F		--	-0.1%	
	06:50	JP	GDP SA QoQ	1Q F		--	0.5%	
	06:50	JP	Trade Balance BoP Basis	Apr P		--	¥700.1b	
	N/A	JP	Eco Watchers Survey Current SA	May		--	45.3	
	N/A	JP	Eco Watchers Survey Outlook SA	May		--	48.4	
	N/A	CN	Exports YoY	May		--	-2.7%	
	N/A	CN	Exports YoY CNY	May		--	3.1%	
	N/A	CN	Imports YoY	May		--	4.0%	
	N/A	CN	Imports YoY CNY	May		--	10.3%	
	N/A	CN	Trade Balance	May		--	\$13.84b	
	N/A	CN	Trade Balance CNY	May		--	93.57b	
	15:30	GB	Construction Output SA MoM	Apr		--	-1.9%	

	15:30	GB	Construction Output SA YoY	Apr	--	3.2%	
	15:30	GB	GDP (MoM)	Apr	--	-0.1%	
	15:30	GB	Index of Services 3M/3M	Apr	--	0.3%	
	15:30	GB	Index of Services MoM	Apr	--	-0.1%	
	15:30	GB	Industrial Production MoM	Apr	--	0.7%	
	15:30	GB	Industrial Production YoY	Apr	--	1.3%	
	15:30	GB	Manufacturing Production MoM	Apr	--	0.9%	
	15:30	GB	Manufacturing Production YoY	Apr	--	2.6%	
	15:30	GB	Monthly GDP 3M/3M Change	Apr	--	--	
	15:30	GB	Trade Balance	Apr	--	-\$5408m	
	15:30	GB	Trade Balance Non EU GBP/Mn	Apr	--	-\$4361m	
	15:30	GB	Visible Trade Balance GBP/Mn	Apr	--	-\$13650m	
<b>Tue/11-Jun-19</b>	05:45	NZ	Mfg Activity SA QoQ	1Q	--	-0.5%	
	05:45	NZ	Mfg Activity Volume QoQ	1Q	--	2.0%	
	08:30	AU	NAB Business Conditions	May	--	3	
	08:30	AU	NAB Business Confidence	May	--	0	
11-Jun - 18-Jun	N/A	CN	Foreign Direct Investment YoY CNY	May	--	6.3%	
	13:00	JP	Machine Tool Orders YoY	May P	--	-33.4%	
	15:30	GB	Average Weekly Earnings 3M/YoY	Apr	--	3.2%	
	15:30	GB	Claimant Count Rate	May	--	3.0%	
	15:30	GB	Employment Change 3M/3M	Apr	--	99k	
	15:30	GB	ILO Unemployment Rate 3Mths	Apr	--	3.8%	
	15:30	GB	Jobless Claims Change	May	--	24.7k	
	15:30	EZ	Sentix Investor Confidence	Jun	--	5.3	
	15:30	GB	Weekly Earnings ex Bonus 3M/YoY	Apr	--	3.3%	
	17:00	US	NFIB Small Business Optimism	May	--	103.5	
	19:30	US	PPI Ex Food and Energy MoM	May	--	0.1%	
	19:30	US	PPI Ex Food and Energy YoY	May	--	2.4%	
	19:30	US	PPI Ex Food, Energy, Trade MoM	May	--	0.4%	
	19:30	US	PPI Ex Food, Energy, Trade YoY	May	--	2.2%	
	19:30	US	PPI Final Demand MoM	May	--	0.2%	
	19:30	US	PPI Final Demand YoY	May	--	2.2%	
<b>Wed/12-Jun-19</b>	06:00	KR	Unemployment rate SA	May	--	4.1%	
	06:25	AU	RBA's Kent Speaks in Melbourne				
	06:50	JP	Core Machine Orders MoM	Apr	--	3.8%	
	06:50	JP	Core Machine Orders YoY	Apr	--	-0.7%	
	06:50	JP	PPI MoM	May	--	0.3%	
	06:50	JP	PPI YoY	May	--	1.2%	
	07:30	AU	Westpac Consumer Conf Index	Jun	--	101.3	
	07:30	AU	Westpac Consumer Conf SA MoM	Jun	--	0.6%	
	08:30	CN	CPI YoY	May	--	2.5%	
	08:30	CN	PPI YoY	May	--	0.9%	
	16:00	AU	RBA's Ellis Speaks in Melbourne				
	19:30	US	CPI Core Index SA	May	--	261.735	
	19:30	US	CPI Ex Food and Energy MoM	May	0.2%	0.1%	
	19:30	US	CPI Ex Food and Energy YoY	May	--	2.1%	
	19:30	US	CPI Index NSA	May	--	255.548	
	19:30	US	CPI MoM	May	0.1%	0.3%	
	19:30	US	CPI YoY	May	1.8%	2.0%	
	19:30	US	Real Avg Hourly Earning YoY	May	--	1.2%	
	19:30	US	Real Avg Weekly Earnings YoY	May	--	0.9%	
	21:30	US	DOE Cushing OK Crude Inventory	Jun-07	--	--	
	21:30	US	DOE U.S. Crude Oil Inventories	Jun-07	--	--	
	21:30	US	DOE U.S. Distillate Inventory	Jun-07	--	--	
	21:30	US	DOE U.S. Gasoline Inventories	Jun-07	--	--	
<b>Thu/13-Jun-19</b>	01:00	US	Monthly Budget Statement	May	--	\$160.3b	
	06:01	GB	RICS House Price Balance	May	--	-23%	
	06:50	JP	BSI Large All Industry QoQ	2Q	--	-1.7	
	06:50	JP	BSI Large Manufacturing QoQ	2Q	--	-7.3	
	08:00	AU	Consumer Inflation Expectation	Jun	--	3.3%	
	08:30	AU	Employment Change	May	--	28.4k	
	08:30	AU	Full Time Employment Change	May	--	-6.3k	
	08:30	AU	Part Time Employment Change	May	--	34.7k	
	08:30	AU	Participation Rate	May	--	65.8%	
	08:30	AU	Unemployment Rate	May	--	5.2%	
	11:30	JP	Tertiary Industry Index MoM	Apr	--	-0.4%	
	12:45	CH	SECO June 2019 Economic Forecasts				
	13:00	DE	CPI EU Harmonized MoM	May F	--	--	
	13:00	DE	CPI EU Harmonized YoY	May F	--	--	
	13:00	DE	CPI MoM	May F	--	--	
	13:00	DE	CPI YoY	May F	--	--	

	14:00	CH	KOF Institute Summer Economic Forecast					
	14:30	CH	SNB 3-Month Libor Lower Target Range	Jun-13		--	-1.25%	
	14:30	CH	SNB 3-Month Libor Upper Target Range	Jun-13		--	-0.25%	
	14:30	CH	SNB Sight Deposit Interest Rate	Jun-13		--	-0.75%	
	16:00	EZ	Industrial Production SA MoM	Apr		--	-0.3%	
	16:00	EZ	Industrial Production WDA YoY	Apr		--	-0.6%	
	19:30	US	Continuing Claims	Jun-01		--	--	
	19:30	US	Initial Jobless Claims	Jun-08		--	--	
<b>Fri/14-Jun-19</b>	05:30	NZ	BusinessNZ Manufacturing PMI	May		--	53	
	09:00	CN	Industrial Production YoY	May		--	5.4%	
	09:00	CN	Industrial Production YTD YoY	May		--	6.2%	
	09:00	CN	Retail Sales YoY	May		--	7.2%	
	09:00	CN	Retail Sales YTD YoY	May		--	8.0%	
	09:00	CN	Surveyed Jobless Rate	May		--	5.0%	
	11:30	JP	Capacity Utilization MoM	Apr		--	-0.4%	
	11:30	JP	Industrial Production MoM	Apr F		--	--	
	11:30	JP	Industrial Production YoY	Apr F		--	--	
	15:30	HK	Industrial Production YoY	1Q		--	1.3%	
	15:30	HK	PPI YoY	1Q		--	0.3%	
	19:30	US	Retail Sales Advance MoM	May		--	-0.2%	
	19:30	US	Retail Sales Control Group	May		--	0.0%	
	19:30	US	Retail Sales Ex Auto and Gas	May		--	-0.2%	
	19:30	US	Retail Sales Ex Auto MoM	May		--	0.1%	
	20:15	US	Capacity Utilization	May		--	77.9%	
	20:15	US	Industrial Production MoM	May		--	-0.5%	
	20:15	US	Manufacturing (SIC) Production	May		--	-0.5%	
	21:00	US	Business Inventories	Apr		--	0.0%	
	21:00	US	U. of Mich. 1 Yr Inflation	Jun P		--	--	
	21:00	US	U. of Mich. 5-10 Yr Inflation	Jun P		--	--	
	21:00	US	U. of Mich. Current Conditions	Jun P		--	--	
	21:00	US	U. of Mich. Expectations	Jun P		--	--	
	21:00	US	U. of Mich. Sentiment	Jun P		--	--	
<b>Sat/15-Jun-19</b>	00:00	US	Baker Hughes U.S. Rig Count	Jun-14		--	--	

### Dow Jones (1YMM9 – Jun)

Exp. Date: 21 Jun 2019



<b>RESISTANCE</b>	26583	
	26334	
	26181	
<b>SUPPORT</b>	25779	
	25530	
	25377	
<b>SUGGESTION</b>	BUY	26010
	SELL	---
	S/L	25860
	T/P:	26260 26410

DATE	OPEN	HIGH	LOW	RANGE	CLOSE	SETTLE	CHANGE	CHANGE %	VOLUME
07 June	25701	26085	25683	402	26029	26029	↑ 668	2.63	202024

WEEKLY		JUNE		2019	
HIGH	LOW	HIGH	LOW	HIGH	LOW
26085 (07/Jun)	24610 (03/Jun)	26085 (07/Jun)	24610 (03/Jun)	26694 (24/Apr)	22563 (04/Jan)

### Nikkei (SSlamM9 – Jun)

Exp. Date: 13 Jun 2019



<b>RESISTANCE</b>	21376	
	21218	
	21126	
<b>SUPPORT</b>	20876	
	20718	
	20626	
<b>SUGGESTION</b>	BUY	21015
	SELL	---
	S/L	20865
	T/P:	21190 21215

DATE	OPEN	HIGH	LOW	RANGE	CLOSE	SETTLE	CHANGE	CHANGE%	VOLUME
07 June SS1pmM9	20905	21060	20865	195	21035	---	↑ 310	1.49	31128
07 June SS1amM9	20870	20930	20810	120	20925	20925	↑ 580	2.85	40264

WEEKLY		JUNE		2019	
HIGH	LOW	HIGH	LOW	HIGH	LOW
21060 (07/Jun)	20285 (04/Jun)	21060 (07/Jun)	20285 (04/Jun)	22495 (03/May)	19205 (04/Jan)



### Kospi 200 (KSM9 – Jun)

Exp. Date: 13 Jun 2019



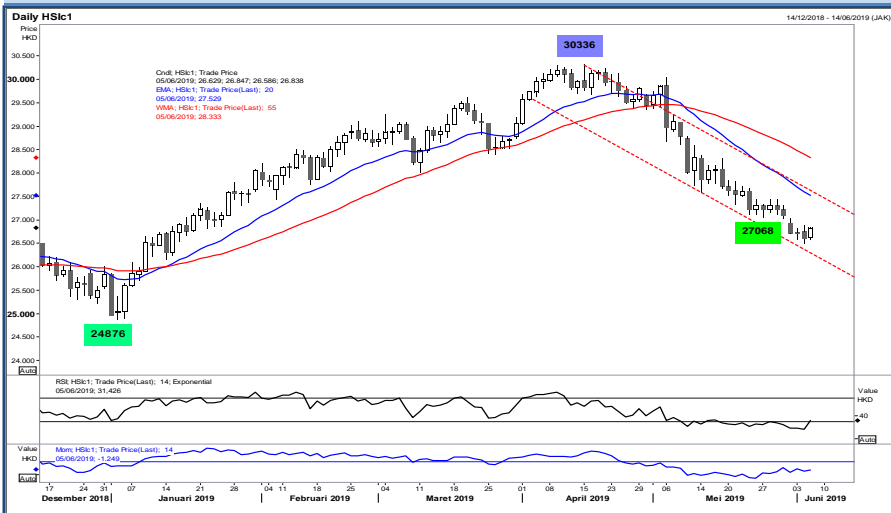
RESISTANCE	274.25	
	272.00	
	270.30	
SUPPORT	266.35	
	264.10	
	262.40	
SUGGESTION	BUY	267.40
	SELL	---
	S/L	265.90
	T/P:	270.40 271.35

DATE	OPEN	HIGH	LOW	RANGE	CLOSE	SETTLE	CHANGE	CHANGE %	VOLUME
07 June	267.75	269.75	265.80	3.95	267.60	267.60	↑ 0.55	0.21	260738

WEEKLY		JUNE		2019	
HIGH	LOW	HIGH	LOW	HIGH	LOW
269.75 (07/Jun)	261.90 (03/Jun)	269.75 (07/Jun)	261.90 (03/Jun)	292.10 (17/Apr)	255.60 (04/Jan)

### Hang Seng (HSIM9 – JUN)

Exp. Date: 27 June 2019



RESISTANCE	27364	
	27125	
	26983	
SUPPORT	26602	
	26363	
	26221	
SUGGESTION	BUY	26940
	SELL	---
	S/L	26790
	T/P:	27140 27290

DATE	OPEN	HIGH	LOW	RANGE	CLOSE	SETTLE	CHANGE	CHANGE %	VOLUME
07 June	--	H	O	L	I	D	A	Y	--

WEEKLY		JUNE		2019	
HIGH	LOW	HIGH	LOW	HIGH	LOW
26886 (04/Jun)	26505 (04/Jun)	26886 (04/Jun)	26505 (04/Jun)	30336 (15/Apr)	24876 (03/Jan)



**DISCLAIMER:**

*The information contained above is intended to provide general information and does not constitute or purports to be a financial advice, investment advice, trading advice, or any other advice. Any strategies, views or opinions expressed above are not intended to be presented as an offer or solicitation for the purchase or sale of any financial instrument. Client should seek personal professional advice before making any decisions. The client should ensure that financial instruments are suitable for his/her own individual objectives, financial situation and investment needs. This report is prepared for the use of Alpha Gold Futures clients. The reproduction and redistribution of this material is strictly prohibited*