

## Daily Outlook

### GLOBAL STOCK INDEX

|   |   |
|---|---|
| <p><b><u>DJIA</u></b></p>                     | <p>U.S. stocks rose on Monday, following a sharp sell-off in the prior session, after U.S. President Donald Trump predicted a trade deal with China, cooling investor concerns after a ramp-up in rhetoric derailed markets last week.</p> <p>Following the G7 summit of world leaders in Biarritz, France, Trump said he believed China was sincere about the desire to reach a deal, citing what he described as increasing economic pressure on Beijing and job losses there.</p> <p>Shares of tariff-sensitive companies rose in response. Apple Inc's 1.90% gain provided the biggest boost to each of the major indexes.</p> <p>Chipmakers, which are heavily reliant upon China for revenue, also rose. The Philadelphia Semiconductor index .SOX added 0.86% after slumping more than 4% on Friday.</p> <p>Still, market participants said the rebound paled in comparison to last week's decline, and they expected recent volatility to continue.</p> <p>The Dow Jones Industrial Average rose 269.93 points, or 1.05%, to 25,898.83, the S&amp;P 500 gained 31.27 points, or 1.10%, to 2,878.38, and the Nasdaq Composite added 101.97 points, or 1.32%, to 7,853.74.</p> <p>Commerce Department data showed new orders for key U.S.-made capital goods rose modestly in July, while shipments fell by the most in nearly three years. The data could provide the Federal Reserve with more fuel to cut interest rates again when policymakers meet next month.</p> <p>Concerns about the global economy slipping into recession and uncertainty over the pace of U.S. interest rate cuts have created some anxiety about how long the current U.S. expansion will last. The S&amp;P 500 is off more than 5% from the record high hit in late July after suffering its longest run of weekly declines since May.</p> |
| <p><b><u>Nikkei</u></b></p>                   | <p>Tokyo's benchmark Nikkei index plunged more than two percent on Monday as the yen surged against the dollar on escalating US-China trade tensions.</p> <p>The Nikkei 225 fell 2.17 per cent, or 449.87 points, to close at 20,261.04, while the broader Topix index lost 1.61 per cent, or 24.22 points, to 1,478.03.</p> <p>The dollar, which dropped below 105 yen in early trade, changed hands at 105.24 yen against the US dollar in Asian afternoon trade from 105.39 yen in New York on Friday.</p> <p>The greenback's fall came after US President Donald Trump said he is raising tariffs on Chinese imports in response to Beijing's threat to impose an additional levy on American goods.</p> <p>Earlier in the day, the yen hit the highest level against the dollar since November 2016, when the US currency weakened on expectations of then-president-elect Trump's fiscal expansion policy.</p> <p>The fall in Tokyo shares was led by exporters, with Toyota losing 0.67 per cent to 6,869 yen and Nissan down 1.53 per cent at 648.8 yen.</p> <p>Nintendo dropped 2.83 per cent to 39,820 yen as Sony fell 1.08 per cent to 5,839 yen.</p>   |
| <p><b><u>Kospi</u></b></p>                    | <p>South Korean shares closed down more than 1.6 per cent on Monday, in line with broader Asia, as investors stayed on the sidelines due to an escalation in US-China trade war. The won fell, while the benchmark bond yields slipped on safe-haven demand.</p> <p>Chinese Vice Premier Liu He on Monday said China is willing to resolve its trade dispute with the United States through "calm" negotiations and resolutely opposes the escalation of the conflict.</p> <p>The trade dispute between the world's two largest economies sharply escalated since Friday, with both sides levelling more tariffs on each other's exports.</p> <p>Seoul's main stock index Kospi ended down 31.99 points, or 1.64 per cent, at 1,916.31, falling for the third consecutive session and marking its biggest intraday percentage loss since Aug 5.</p> <p>In offshore trading, the won was quoted at 1,217.9 per US dollar, down 0.4 per cent from the previous day, while in non-deliverable forward trading its one-month contract was quoted at 1,216.8 per US dollar.</p> <p>MSCI's broadest index of Asia-Pacific shares outside Japan was down 1.97 per cent, after US stocks ended its previous session with a big loss. Japanese stocks fell 2.17 per cent.</p> <p>The Kospi has fallen 6.11 per cent so far this year, and/but lost 6.4 per cent in the previous 30 trading sessions.</p> <p>The trading volume during the session in the Kospi index was 317.49 million shares. Of the total 892 traded issues, only 67 shares advanced.</p>   |
| <p><b><u>Hang Seng &amp; Shanghai</u></b></p> | <p>Hong Kong stocks tumbled on Monday after US President Donald Trump and China ramped up their trade war with fresh tariffs, while investors were also spooked by more violent clashes between police and protesters in the city.</p> <p>The Hang Seng Index fell 1.91 per cent, or 499.00 points, to 25,680.33.</p> <p>The benchmark Shanghai Composite Index dropped 1.17 per cent, or 33.86 points, to 2,863.57 and the</p>   |

Shenzhen Composite Index, which tracks stocks on China's second exchange, retreated 0.77 per cent, or 12.13 points, to 1,566.57.

**Closing Prices – 26 August 2019**

|        | CLOSE    | CHANGE         |             | CLOSE     | CHANGE         |
|--------|----------|----------------|-------------|-----------|----------------|
| .DJI   | 25898.83 | ↑ 269.93/1.05% | .N225       | 20261.04  | ↓ 449.87/2.17% |
| /.SPX  | 2878.38  | ↑ 31.27/1.10%  | .KS200      | 1916.31   | ↓ 31.99/1.64%  |
| /.IXIC | 7853.735 | ↑ 101.97/1.32% | .HSI        | 25680.33  | ↓ 499.00/1.91% |
| JPY=   | 106.17   | ↑ 0.78/0.74%   | /.SSEC      | 2863.5674 | ↓ 33.86/1.17%  |
| KRW=   | 1217.76  | ↑ 7.07/0.58%   | /CLc1 (Oil) | 53.78     | ↓ 0.17/0.32%   |

**ECONOMIC INDICATORS**

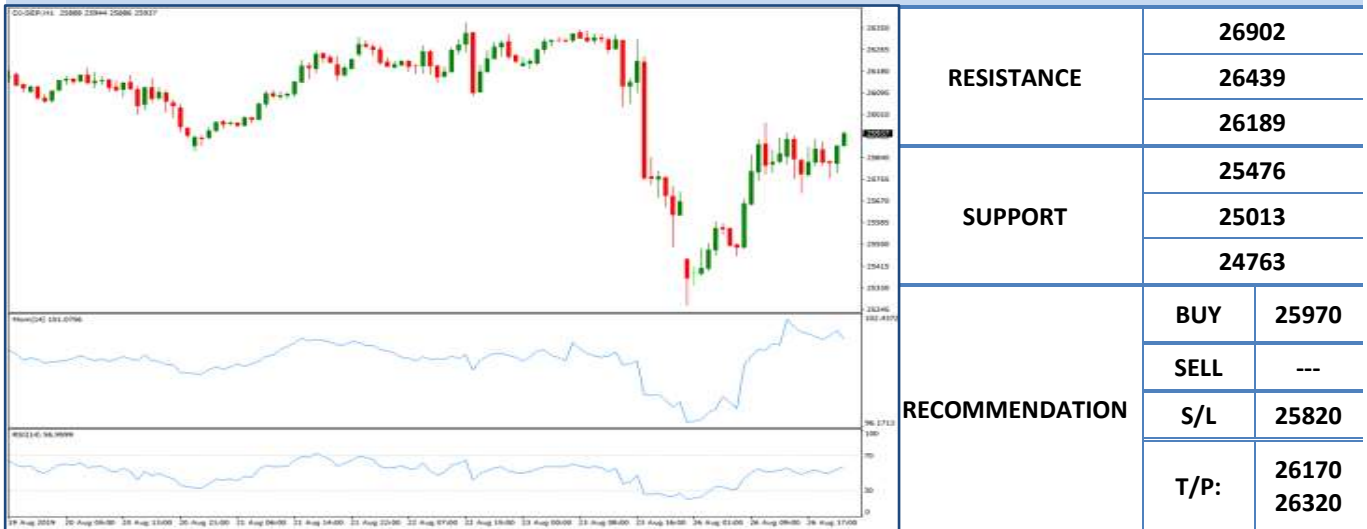
| DATE          | WIB             | CTY                                | INDICATORS  | PER                  | ACTUAL    | FORECAST | PREV.     | REV.  |  |
|---------------|-----------------|------------------------------------|---|----------------------|-----------|----------|-----------|-------|--|
| Mon/26-Aug-19 | 05:45           | NZ                                 | Exports NZD   | Jul                  | 5.03b     | 5.05b    | 5.01b     |       |  |
|               | 05:45           | NZ                                 | Imports NZD   | Jul                  | 5.71b     | 5.20b    | 4.65b     |       |  |
|               | 05:45           | NZ                                 | Trade Balance 12 Mth YTD NZD                                  | Jul                  | -5463m    | -5012m   | -4937m    |       |  |
|               | 05:45           | NZ                                 | Trade Balance NZD   | Jul                  | -685m     | -254m    | 365m      |       |  |
|               | 12:00           | JP                                 | Coincident Index  | Jun F                | 100.4     | --       | 100.4     |       |  |
|               | 12:00           | JP                                 | Leading Index CI  | Jun F                | 93.3      | --       | 93.3      |       |  |
|               | All             | GB                                 | <b>Bank Holiday</b>   |                      |           |          |           |       |  |
|               | Day 3           | All                                | G 7 Meetings  |                      |           |          |           |       |  |
|               | 15:00           | DE                                 | IFO Business Climate  | Aug                  | 94.3      | 95.0     | 95.7      | 95.8  |  |
|               | 15:00           | DE                                 | IFO Current Assessment  | Aug                  | 97.3      | 98.8     | 99.4      | 99.6  |  |
|               | 15:00           | DE                                 | IFO Expectations  | Aug                  | 91.3      | 91.8     | 92.2      | 92.1  |  |
|               | 15:30           | HK                                 | Exports YoY   | Jul                  | -5.7%     | --       | -9.0%     |       |  |
|               | 15:30           | HK                                 | Imports YoY   | Jul                  | -8.7%     | --       | -7.5%     |       |  |
|               | 15:30           | HK                                 | Trade Balance HKD   | Jul                  | H\$-32.2b | H\$-49b  | H\$-55.2b |       |  |
|               | 19:30           | US                                 | Cap Goods Orders Nondef Ex Air                                | Jul P                | 0.4%      | 0.0%     | 1.5%      | 0.9%  |  |
|               | 19:30           | US                                 | Cap Goods Ship Nondef Ex Air                                  | Jul P                | -0.7%     | 0.1%     | 0.3%      | 0.0%  |  |
|               | 19:30           | US                                 | Chicago Fed Nat Activity Index                                | Jul                  | -0.36     | 0.00     | -0.02     | 0.03  |  |
|               | 19:30           | US                                 | Durable Goods Orders  | Jul P                | 2.1%      | 1.2%     | 1.9%      | 1.8%  |  |
|               | 19:30           | US                                 | Durables Ex Transportation                                    | Jul P                | -0.4%     | 0.0%     | 1.0%      |       |  |
|               | 20:45           | GB                                 | BOE Governor Carney Speaks on Financial Services in Frankfurt |                      |           |          |           |       |  |
| 21:30         | US              | Dallas Fed Manf. Activity          | Aug   | 2.7                  | -4.0      | -6.3     |           |       |  |
| Tue/27-Aug-19 | 04:00           | KR                                 | Consumer Confidence   | Aug                  |           | --       | 95.9      |       |  |
|               | 06:50           | JP                                 | PPI Services YoY  | Jul                  |           | --       | 0.7%      |       |  |
|               | 08:30           | CN                                 | Industrial Profits YoY  | Jul                  |           | --       | -3.1%     |       |  |
|               | 09:00           | AU                                 | RBA's Debelle Gives Speech in Canberra                        |                      |           |          |           |       |  |
|               | 13:00           | DE                                 | Capital Investment QoQ  | 2Q                   |           | --       | 1.1%      |       |  |
|               | 13:00           | DE                                 | GDP NSA YoY   | 2Q F                 |           | --       | 0.0%      |       |  |
|               | 13:00           | DE                                 | GDP SA QoQ  | 2Q F                 |           | -0.1%    | -0.1%     |       |  |
|               | 13:00           | DE                                 | GDP WDA YoY   | 2Q F                 |           | --       | 0.4%      |       |  |
|               | 13:00           | DE                                 | Government Spending QoQ                                       | 2Q                   |           | --       | -0.3%     |       |  |
|               | 13:00           | DE                                 | Private Consumption QoQ                                       | 2Q                   |           | --       | 1.2%      |       |  |
|               | 27-Aug - 03-Sep | N/A                                | DE  | Retail Sales MoM     | Jul       |          | --        | 3.5%  |  |
|               | 27-Aug - 03-Sep | N/A                                | DE  | Retail Sales NSA YoY | Jul       |          | --        | -1.6% |  |
|               | 15:30           | GB                                 | UK Finance Loans for Housing                                  | Jul                  |           | --       | 42653     |       |  |
|               | 20:00           | US                                 | FHFA House Price Index MoM                                    | Jun                  |           | --       | 0.1%      |       |  |
| 20:00         | US              | House Price Purchase Index QoQ     | 2Q  |                      | 0.2%      | 1.1%     |           |       |  |
| 20:00         | US              | S&P CoreLogic CS 20-City MoM SA    | Jun   |                      | 0.1%      | 0.14%    |           |       |  |
| 20:00         | US              | S&P CoreLogic CS 20-City NSA Index | Jun   |                      | --        | 216.94   |           |       |  |
| 20:00         | US              | S&P CoreLogic CS 20-City YoY NSA   | Jun   |                      | --        | 2.39%    |           |       |  |
| 20:00         | US              | S&P CoreLogic CS US HPI NSA Index  | Jun   |                      | --        | 209.66   |           |       |  |
| 20:00         | US              | S&P CoreLogic CS US HPI YoY NSA    | Jun   |                      | --        | 3.43%    |           |       |  |
| 21:00         | US              | Conf. Board Consumer Confidence    | Aug   |                      | 130       | 135.7    |           |       |  |

|                      |       |    |   |        |  |          |           |  |
|----------------------|-------|----|---|--------|--|----------|-----------|--|
|                      | 21:00 | US | Conf. Board Expectations                                  | Aug    |  | --       | 112.2     |  |
|                      | 21:00 | US | Conf. Board Present Situation                             | Aug    |  | --       | 170.9     |  |
|                      | 21:00 | US | Richmond Fed Manufact. Index                              | Aug    |  | 2        | -12       |  |
| <b>Wed/28-Aug-19</b> | 08:30 | AU | Construction Work Done                                    | 2Q     |  | --       | -1.9%     |  |
|                      | 13:00 | DE | GfK Consumer Confidence                                   | Sep    |  | --       | 9.7       |  |
|                      | 15:00 | CH | Credit Suisse Survey Expectations                         | Aug    |  | --       | -24       |  |
| 28-Aug - 03-Sep      | N/A   | GB | Nationwide House Px MoM                                   | Aug    |  | --       | 0.3%      |  |
| 28-Aug - 03-Sep      | N/A   | GB | Nationwide House Px NSA YoY                               | Aug    |  | --       | 0.3%      |  |
|                      | 21:30 | US | DOE Cushing OK Crude Inventory                            | Aug-23 |  | --       | -2485k    |  |
|                      | 21:30 | US | DOE U.S. Crude Oil Inventories                            | Aug-23 |  | --       | -2732k    |  |
|                      | 21:30 | US | DOE U.S. Distillate Inventory                             | Aug-23 |  | --       | 2610k     |  |
|                      | 21:30 | US | DOE U.S. Gasoline Inventories                             | Aug-23 |  | --       | 312k      |  |
|                      | 23:20 | US | Fed's Barkin Speraks to West Virginia Chamber of Commerce |        |  |          |           |  |
| <b>Thu/29-Aug-19</b> | 04:00 | KR | Business Survey Manufacturing                             | Sep    |  | --       | 71        |  |
|                      | 04:00 | KR | Business Survey Non-Manufacturing                         | Sep    |  | --       | 71        |  |
|                      | 04:30 | US | Fed's Daly Speaks at RBNZ/IMF Conference in New Zealand   |        |  |          |           |  |
|                      | 08:00 | NZ | ANZ Activity Outlook                                      | Aug    |  | --       | 5         |  |
|                      | 08:00 | NZ | ANZ Business Confidence                                   | Aug    |  | --       | -44.3     |  |
|                      | 08:30 | JP | BOJ Hitoshi Suzuki speaks in Kumamoto                     |        |  |          |           |  |
|                      | 08:30 | AU | Private Capital Expenditure                               | 2Q     |  | --       | -1.7%     |  |
|                      | 14:55 | DE | Unemployment Change (000's)                               | Aug    |  | --       | 1.0k      |  |
|                      | 14:55 | DE | Unemployment Claims Rate SA                               | Aug    |  | --       | 5.0%      |  |
|                      | 16:00 | EZ | Business Climate Indicator                                | Aug    |  | --       | -0.12     |  |
|                      | 16:00 | EZ | Consumer Confidence                                       | Aug F  |  | --       | --        |  |
|                      | 16:00 | EZ | Economic Confidence                                       | Aug    |  | --       | 102.7     |  |
|                      | 16:00 | EZ | Industrial Confidence                                     | Aug    |  | --       | -7.4      |  |
|                      | 16:00 | EZ | Services Confidence                                       | Aug    |  | --       | 10.6      |  |
|                      | 19:00 | DE | CPI EU Harmonized MoM                                     | Aug P  |  | --       | 0.4%      |  |
|                      | 19:00 | DE | CPI EU Harmonized YoY                                     | Aug P  |  | --       | 1.1%      |  |
|                      | 19:00 | DE | CPI MoM   | Aug P  |  | --       | 0.5%      |  |
|                      | 19:00 | DE | CPI YoY   | Aug P  |  | --       | 1.7%      |  |
|                      | 19:30 | US | Advance Goods Trade Balance                               | Jul    |  | -\$74.0b | -\$74.2b  |  |
|                      | 19:30 | US | Continuing Claims   | Aug-17 |  | --       | --        |  |
|                      | 19:30 | US | Core PCE QoQ  | 2Q S   |  | --       | 1.80%     |  |
|                      | 19:30 | CA | Current Account Balance                                   | 2Q     |  | --       | -\$17.35b |  |
|                      | 19:30 | US | GDP Annualized QoQ  | 2Q S   |  | 2.0%     | 2.1%      |  |
|                      | 19:30 | US | GDP Price Index   | 2Q S   |  | 2.4%     | 2.4%      |  |
|                      | 19:30 | US | Initial Jobless Claims                                    | Aug-24 |  | --       | --        |  |
|                      | 19:30 | US | Personal Consumption                                      | 2Q S   |  | --       | 4.3%      |  |
|                      | 19:30 | US | Retail Inventories MoM                                    | Jul    |  | --       | -0.1%     |  |
|                      | 19:30 | US | Wholesale Inventories MoM                                 | Jul P  |  | --       | 0.0%      |  |
|                      | 21:00 | CA | CFIB Business Barometer                                   | Aug    |  | --       | 57.8      |  |
|                      | 21:00 | US | Pending Home Sales MoM                                    | Jul    |  | 0.0%     | 2.8%      |  |
|                      | 21:00 | US | Pending Home Sales NSA YoY                                | Jul    |  | --       | -0.6%     |  |
| <b>Fri/30-Aug-19</b> | 05:00 | NZ | ANZ Consumer Confidence Index                             | Aug    |  | --       | 116.4     |  |
|                      | 05:00 | NZ | ANZ Consumer Confidence MoM                               | Aug    |  | --       | -5.1%     |  |
|                      | 06:00 | KR | Cyclical Leading Index Change                             | Jul    |  | --       | -0.2      |  |
|                      | 06:00 | KR | Industrial Production SA MoM                              | Jul    |  | --       | 0.2%      |  |
|                      | 06:00 | KR | Industrial Production YoY                                 | Jul    |  | --       | -2.9%     |  |
|                      | 06:01 | GB | GfK Consumer Confidence                                   | Aug    |  | -10      | -11       |  |
|                      | 06:01 | GB | Lloyds Business Barometer                                 | Aug    |  | --       | 13        |  |
|                      | 06:30 | JP | Jobless Rate  | Jul    |  | 2.3%     | 2.3%      |  |
|                      | 06:30 | JP | Job-To-Applclicant Ratio                                  | Jul    |  | 1.6      | 1.61      |  |
|                      | 06:50 | JP | Industrial Production MoM                                 | Jul P  |  | 0.3%     | -3.3%     |  |
|                      | 06:50 | JP | Industrial Production YoY                                 | Jul P  |  | -0.4%    | -3.8%     |  |
|                      | 06:50 | JP | Retail Sales MoM  | Jul    |  | --       | 0.0%      |  |
|                      | 06:50 | JP | Retail Sales YoY  | Jul    |  | -1.6%    | 0.5%      |  |
|                      | 08:00 | KR | Bok 7-Day Repo Rate                                       | Aug-30 |  | --       | 1.5%      |  |
|                      | 08:30 | AU | Building Approvals MoM                                    | Jul    |  | --       | -1.2%     |  |
|                      | 08:30 | AU | Building Approvals YoY                                    | Jul    |  | --       | -25.6%    |  |
|                      | 08:30 | AU | Private Sector Credit MoM                                 | Jul    |  | --       | 0.1%      |  |
|                      | 08:30 | AU | Private Sector Credit YoY                                 | Jul    |  | --       | 3.3%      |  |
|                      | 14:00 | CH | KOF Leading Indicator                                     | Aug    |  | 96.5     | 97.1      |  |
|                      | 15:30 | GB | Consumer Credit YoY                                       | Jul    |  | --       | 5.5%      |  |
|                      | 15:30 | GB | Net Consumer Credit                                       | Jul    |  | 1.0b     | 1.0b      |  |
|                      | 15:30 | GB | Net Lending Sec. on Dwellings                             | Jul    |  | --       | 3.7b      |  |
|                      | 15:30 | HK | Retail Sales Value YoY                                    | Jul    |  | --       | -6.7%     |  |
|                      | 15:30 | HK | Retail Sales Volume YoY                                   | Jul    |  | --       | -7.6%     |  |
|                      | 16:00 | EZ | CPI Core YoY  | Aug A  |  | 1.0%     | 0.9%      |  |
|                      | 16:00 | EZ | CPI Estimate YoY  | Aug    |  | 1.1%     | 1.1%      |  |

|                      |       |    |                                |        |  |      |       |  |
|----------------------|-------|----|--------------------------------|--------|--|------|-------|--|
|                      | 16:00 | EZ | Unemployment Rate              | Jul    |  | 7.5% | 7.5%  |  |
|                      | 19:30 | CA | GDP MoM                        | Jun    |  | 0.1% | 0.2%  |  |
|                      | 19:30 | CA | GDP YoY                        | Jun    |  | --   | 1.4%  |  |
|                      | 19:30 | CA | Industrial Product Price MoM   | Jul    |  | --   | -1.4% |  |
|                      | 19:30 | US | PCE Core Deflator MoM          | Jul    |  | 0.2% | 0.2%  |  |
|                      | 19:30 | US | PCE Core Deflator YoY          | Jul    |  | 1.6% | 1.6%  |  |
|                      | 19:30 | US | PCE Deflator MoM               | Jul    |  | 0.2% | 0.1%  |  |
|                      | 19:30 | US | PCE Deflator YoY               | Jul    |  | --   | 1.4%  |  |
|                      | 19:30 | US | Personal Income                | Jul    |  | 0.3% | 0.4%  |  |
|                      | 19:30 | US | Personal Spending              | Jul    |  | 0.5% | 0.3%  |  |
|                      | 19:30 | CA | Quarterly GDP Annualized       | 2Q     |  | 2.9% | 0.4%  |  |
|                      | 19:30 | US | Real Personal Spending         | Jul    |  | --   | 0.2%  |  |
|                      | 20:45 | US | MNI Chicago PMI                | Aug    |  | 48   | 44.4  |  |
|                      | 21:00 | US | U. of Mich. 1 Yr Inflation     | Aug F  |  | --   | 2.7%  |  |
|                      | 21:00 | US | U. of Mich. 5-10 Yr Inflation  | Aug F  |  | --   | 2.6%  |  |
|                      | 21:00 | US | U. of Mich. Current Conditions | Aug F  |  | --   | 107.4 |  |
|                      | 21:00 | US | U. of Mich. Expectations       | Aug F  |  | --   | 82.3  |  |
|                      | 21:00 | US | U. of Mich. Sentiment          | Aug F  |  | 92.4 | 92.1  |  |
| <b>Sat/31-Aug-19</b> | 00:00 | US | Baker Hughes U.S. Rig Count    | Aug-30 |  | --   | --    |  |
|                      | 08:00 | CN | Composite PMI                  | Aug    |  | --   | 53.1  |  |
|                      | 08:00 | CN | Manufacturing PMI              | Aug    |  | 49.6 | 49.7  |  |
|                      | 08:00 | CN | Non-manufacturing PMI          | Aug    |  | --   | 53.7  |  |

### Dow Jones (1YMU9 – Sep)

Exp. Date: 20 Sep 2019



| DATE   | OPEN  | HIGH  | LOW   | RANGE | CLOSE | SETTLE | CHANGE | CHANGE % | VOLUME |
|--------|-------|-------|-------|-------|-------|--------|--------|----------|--------|
| 26 Aug | 25442 | 25976 | 25263 | 713   | 25939 | 25939  | ↑ 270  | 1.05     | --     |

| WEEKLY         |                | AUGUST         |                | 2019           |                |
|----------------|----------------|----------------|----------------|----------------|----------------|
| HIGH           | LOW            | HIGH           | LOW            | HIGH           | LOW            |
| 25976 (26/Aug) | 25263 (26/Aug) | 27143 (01/Aug) | 25030 (06/Aug) | 27392 (15/Jul) | 22563 (04/Jan) |

### Nikkei (SSlamU9 – Sep)

Exp. Date: 12 Sep 2019



| DATE   | OPEN  | HIGH  | LOW   | RANGE | CLOSE | SETTLE | CHANGE | CHANGE% | VOLUME |
|--------|-------|-------|-------|-------|-------|--------|--------|---------|--------|
| 26 Aug | 20040 | 20595 | 20010 | 585   | 20535 | 20535  | ↑ 360  | 1.78    | --     |

| WEEKLY         |                | AUGUST         |                | 2019           |                |
|----------------|----------------|----------------|----------------|----------------|----------------|
| HIGH           | LOW            | HIGH           | LOW            | HIGH           | LOW            |
| 20595 (26/Aug) | 20010 (26/Aug) | 21565 (01/Aug) | 19965 (06/Aug) | 22495 (03/May) | 19205 (04/Jan) |

### Kospi 200 (KSU9 – Sep)

Exp. Date: 11 Sep 2019



|            |        |                  |
|------------|--------|------------------|
| RESISTANCE | 255.56 |                  |
|            | 254.33 |                  |
|            | 253.46 |                  |
| SUPPORT    | 251.36 |                  |
|            | 250.13 |                  |
|            | 249.26 |                  |
| SUGGESTION | BUY    | 253.10           |
|            | SELL   | ---              |
|            | S/L    | 251.60           |
|            | T/P:   | 255.10<br>256.60 |

| DATE   | OPEN   | HIGH   | LOW    | RANGE | CLOSE  | SETTLE | CHANGE | CHANGE % | VOLUME |
|--------|--------|--------|--------|-------|--------|--------|--------|----------|--------|
| 26 Aug | 251.55 | 253.10 | 251.00 | 2.10  | 252.60 | 252.60 | ↓ 3.75 | 1.46     | ---    |

| WEEKLY          |                 | AUGUST          |                 | 2019            |                 |
|-----------------|-----------------|-----------------|-----------------|-----------------|-----------------|
| HIGH            | LOW             | HIGH            | LOW             | HIGH            | LOW             |
| 253.10 (26/Aug) | 251.00 (26/Aug) | 267.80 (01/Aug) | 250.95 (06/Aug) | 292.10 (17/Apr) | 250.95 (06/Aug) |

### Hang Seng (HSIQ9 – AUG)

Exp. Date: 29 Aug 2019



|            |       |                |
|------------|-------|----------------|
| RESISTANCE | 26704 |                |
|            | 26290 |                |
|            | 25985 |                |
| SUPPORT    | 25266 |                |
|            | 24852 |                |
|            | 24547 |                |
| SUGGESTION | BUY   | 25730          |
|            | SELL  | ---            |
|            | S/L   | 25580          |
|            | T/P:  | 25980<br>26130 |

| DATE   | OPEN  | HIGH  | LOW   | RANGE | CLOSE | SETTLE | CHANGE | CHANGE % | VOLUME |
|--------|-------|-------|-------|-------|-------|--------|--------|----------|--------|
| 26 Aug | 25321 | 25726 | 25158 | 568   | 25658 | 25658  | ↓ 484  | 1.85     | --     |

| WEEKLY         |                | AUGUST         |                | 2019           |                |
|----------------|----------------|----------------|----------------|----------------|----------------|
| HIGH           | LOW            | HIGH           | LOW            | HIGH           | LOW            |
| 25726 (26/Aug) | 25158 (26/Aug) | 27683 (01/Aug) | 24814 (15/Aug) | 30336 (15/Apr) | 24814 (15/Aug) |



**DISCLAIMER:**

*The information contained above is intended to provide general information and does not constitute or purports to be a financial advice, investment advice, trading advice, or any other advice. Any strategies, views or opinions expressed above are not intended to be presented as an offer or solicitation for the purchase or sale of any financial instrument. Client should seek personal professional advice before making any decisions. The client should ensure that financial instruments are suitable for his/her own individual objectives, financial situation and investment needs. This report is prepared for the use of Alpha Gold Futures clients. The reproduction and redistribution of this material is strictly prohibited*